

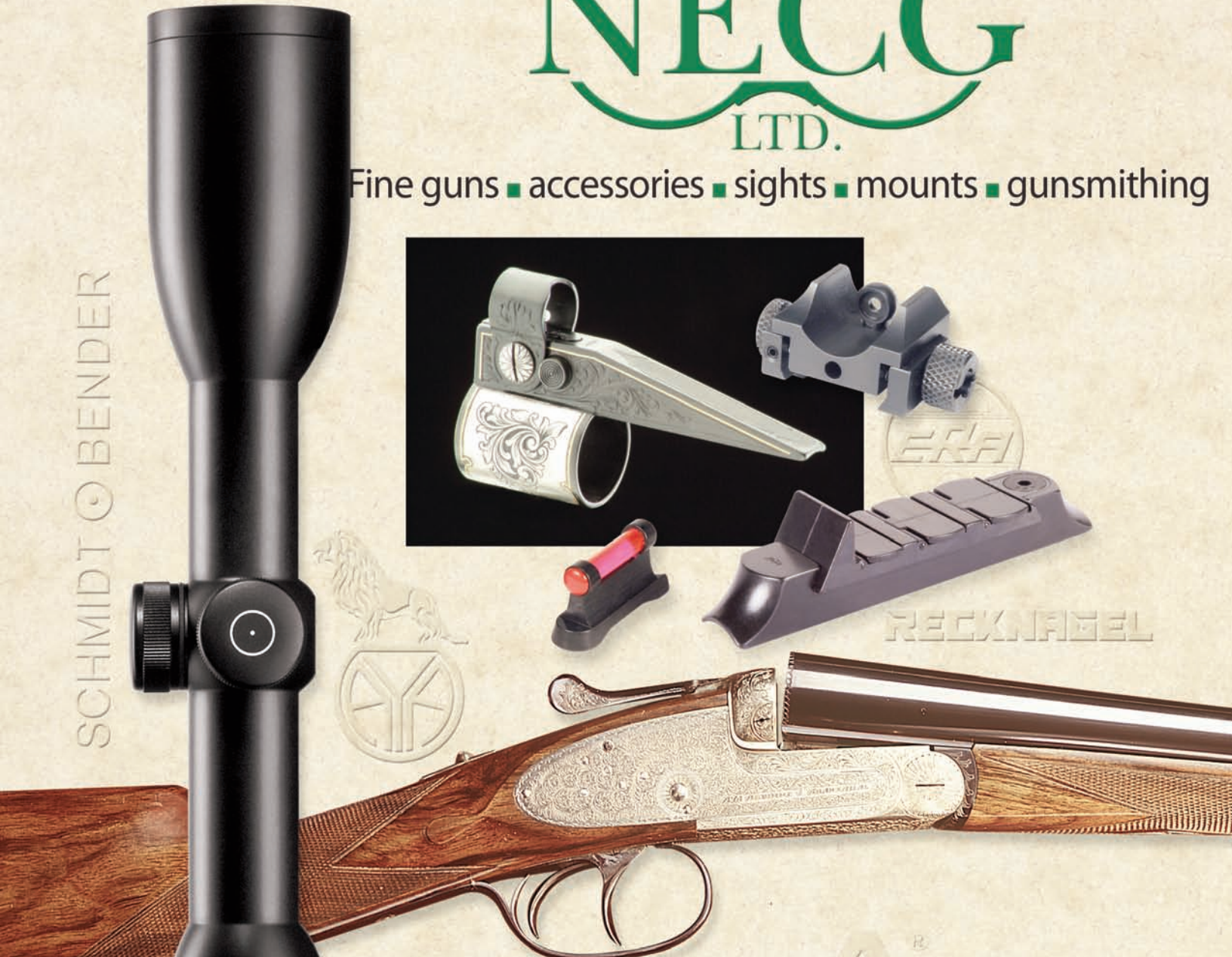
NECCG[®] LTD.

Fine guns ■ accessories ■ sights ■ mounts ■ gunsmithing

SCHMIDT BENDER



RECKNAGEL



SCHMIDT BENDER

VOLUME V

New England Custom

A TRADITION OF UNPARALLELED SERVICES

As our name implies, New England Custom Gun Service, Ltd. was originally founded to

provide top quality gunmaking, gunsmithing and restoration services to discerning customers whose interest and needs fall within the scope of traditional hunting and shooting of long guns. Although we now offer a large

variety of firearms and products to the shooting sports industry we nevertheless still provide top quality gunsmithing as well.

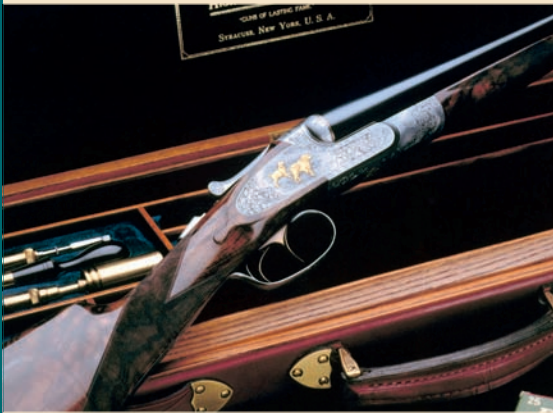


Table of Contents

Services and Custom Firearms

Gunsmithing	1
Overview	2
AYA	24

Scopes

Schmidt & Bender	4
------------------	---

Mounts

EAW Quick-Loc	6
EAW Magnum Fixed	7
German Claw	8
Recknagel	9
Mounts for Special Rifles	10
34mm	11

Gun Service, Ltd

1

Services

GUNSMITHING

The following is a partial list of services we provide. If you do not see what you need, please call us. Chances are we can help you solve your problem.

- Chokes
- Forcing Cones
- Bluing
- Case-hardening
- Action Work
- Open Sights
- Scope Mounting
- Re-barrelling
- Stock Making
- Stock Refinishing
- Checkering
- Complete Restoration
- Stock Carving
- Stock Bending
- Recoil Pads
- Custom Rifles
- Repairs
- Stock Fitting



Call us to discuss your job and we will, if possible, give you a quote over the phone, often, we will need to see the gun before we can give you a quote, due to the wide variations of make and model and the particular condition of your gun.

We stand fully behind our work and hope that our efforts will aid you in some small way to be more successful in the pursuit of the sport which we all love.



Sights	
Masterpiece Banded Ramp	12
Classic Ramp	13
Universal Front Sight	14
Front Side Ramps	15
Rear Sights	16
Peep Sights	19

Components	
Triggers	18
Swivels	20
Slings	21
Pads	22
Accessories and Tools	
Tools	21
Accessories	23

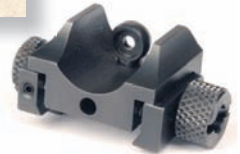
NECG: Your Complete

OVERVIEW



More sights than you've ever seen.

Front sights, rear sights, peeps, ramps, hoods and fiber optics...we have options for virtually every rifle. Many you won't find anywhere else, like our front ramp with unique folding hood. We can outfit CZs, Rugers, Weaver-style bases, and just about any rifle with impeccably German-machined front and rear sights.



You can't hit it if you can't see it.

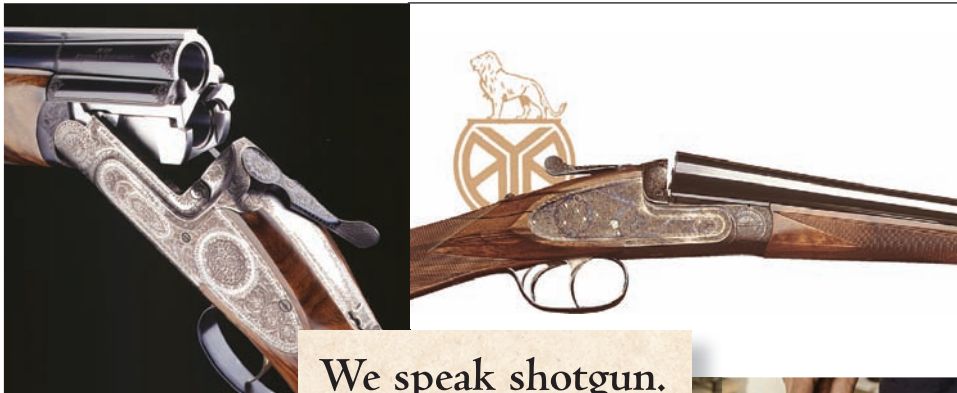
We offer the full line of Schmidt & Bender riflescopes, called by experts "the finest in the world"...including the new 2.5-10x40 Summit, the first Schmidt & Bender built on a one-inch tube.

SCHMIDT  BENDER



Any scope is only as good as its mount, and there are none better than those by EAW and Recknagel...including the most precise detachables on the market. We can devise a mounting solution for just about any rifle made.

Sporting Firearms Source



We speak shotgun.

We can fix them, refinish them, restock them, restore them, rechoke them, and bend a stock properly. We could also fit you with a new AyA side-by-side that we believe represents the most gun for money on the market today. If it has to do with fine doubles and bestguns, we speak the language fluently.



We speak rifles, too.

For well over two decades we've focused upon the care and feeding of high quality big bore and double rifles. If you're looking for something special, a distinctive custom rifle, or if a treasured long gun of yours needs work, let's talk. Pictured above is a NECG Sporter in .375 H&H, built on a customized 1909 Argentine Mauser action and equipped exclusively with components we offer. Auctioned at the 2010 Safari Club International convention.

**If it has to do with
shooting, shotguns,
sights, scopes, stocks
or smithing, call us.**

SCOPES

SCHMIDT  BENDER

They've been called "the best in the world" by experts. And hunters who have used them in the field agree, gaining up to an hour a day more of shootable light. Indeed, the light transmission values of Schmidt & Bender rifle scopes are among the highest ever produced. Likewise, their reputation for quality and ruggedness has been proven around the world.

Zenith

Recipient of the prestigious International Forum Design Award for excellence in product design, selected as "Best of" by major publications in the U.S. and Europe, the Zenith series represents the epitome of quality, performance, and the most advanced optical engineering on the market.

**1.1-4 x 24 Zenith**

The choice for dangerous game. Wide field of view allows you to keep both eyes open; as quick as open sights.

**1.5-6 x 42 Zenith**

Considered by many to be the ultimate all-around scope, from thick bush to open country.

**2.5-10 x 56 Zenith**

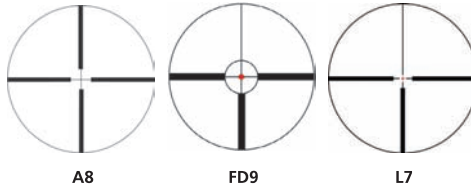
Maximum light transmission; ideal for leopard from a blind, any big game under adverse lighting conditions.

**3-12 x 50 Zenith**

Ideal all-around magnification range, suitable for virtually any game on any continent.

Reticles

Depending upon the scope, reticles are offered in standard (A), illuminated (L), and Flashdot (FD) variations. Our most popular big game reticles are numbers 7, 8 and 9. Other specialized reticles are available in specific hunting scopes. Please visit our website or contact us for complete information. Reticles below are enlarged to show center detail.



A8

FD9

L7

Klassik

The same superb optics and light transmission as our Zenith series, but in a simpler design and minus a few advanced Zenith features. A more economical way to experience legendary Schmidt & Bender quality.

**3-12 x 42 Klassik**

Our most popular scope. Low profile facilitates mounting, and a magnification range appropriate for almost any game, anywhere.

**3-12 x 50 Klassik**

A larger objective provides even greater light transmission at dawn, dusk, and in inclement weather.

**2.5-10 x 56 Klassik**

The ultimate scope for adverse lighting conditions. Long main tube allows mounting on the longest actions.

**4-16 x 50 Klassik and Varmint**

The choice for flat-shooting rifles and long ranges. Offered with big game and varmint reticles.

**4 x 36 Klassik**

The most popular fixed-power magnification in the world. Compact, lightweight, reasonably priced and highly versatile.

**6 x 42 Klassik**

Simple and economical, fixed 6-power magnification is applicable to a vast range of hunting situations.

**8 x 56 Klassik**

The absolute maximum in light transmission, with 8x magnification for precise shot placement at longer ranges.

Precision Hunter

Three of our most popular Klassik riflescopes, modified for the hunter who needs to consistently make accurate shots at longer ranges. Each has an externally adjustable target-style bullet drop compensating elevation knob, with gradations and numbers that allow you to create custom distance charts. Standard with the P3 Mil-Dot reticle.

**3-12 x 42 Precision Hunter****3-12 x 50 Precision Hunter****4-16 x 50 Precision Hunter**

Summit

The first ever Schmidt & Bender built on a one-inch tube, allowing easy fitting to common one-inch rings. Just 16.8 ounces, it is one of the lightest scopes we've ever built... low and streamlined, ideal for a mountain rifle. The Summit's reticle is in the second focal plane, meaning that it's viewed size does not change across the entire magnification range. Made in Germany, built for America.

**2.5-10 x 40 Summit**

Specs

	Overall length (in/mm)	Weight (w/std reticle, oz/gr)	Reticles
Zenith			
1.1-4x24	11.4/290	16.27/461	A2/A7/A9/FD2/FD7/FD9
1.5-6x42	12.3/313	20.5/581	A7/A9/FD7/FD9
2.5-10x56	13/330	20.5/581	A7/A9/FD7/FD9
3-12x50	13.5/342	23.64/670	A7/A9/FD7/FD9
Klassik			
2.5-10x56	15/381	22/624	A7/A8/A9/L7/LD9
3-12x42	13.5/343	20/567	A7/A8/A9/L7/LD9
3-12x50	13.5/343	21/596	A7/A8/A9/L7/LD9
4-16x50	15.8/402	26/744	A7/A8/A9/8Dot
4 x 36	11.4/290	14/397	A7/A8/A9
6 x 42	13.25/337	17.3/490	A7/A8/A9
8 x 56	14.6/371	22.1/627	A7/A8/A9
Summit			
2.5-10x40	13.2/336	16.8/480	A7/A8/A9

Illuminated reticles add approximately one ounce to the weights listed above.

Riflescopes for Hunting, Military & LE

There is no greater testimonial to a riflescope than when it is proven in the hands of professional shooters in the harshest, highest-pressure environments on earth. Schmidt & Bender PM II scopes are used by many of the most elite military and law enforcement teams in the world. Indeed, many of our scopes were developed in conjunction with the U.S. military to address unique concerns and sophisticated applications.

For example, since 2005, Schmidt & Bender riflescopes have been standard equipment for the U.S. Marine Corps—the only scope that could meet or exceed every one of the Corps' stringent requirements.

You needn't take our word on it. Just ask a professional.

Short Dot

Created for the Special Operations community for flexibility from CQB to longer range applications.



1-8 x 24 Short Dot

8x magnification range effective from point blank to hundreds of meters; ideal for three-gun matches.



1.1-4 x 20 Short Dot

The original Short Dot in non-locking configuration. Includes BDCs for M855, 75 gr. TAP, Lake City 16 and Lake City 20.



1.1-4 x 20 Locking Short Dot

Includes locking turrets and CQB reticle. M855, 75 gr. TAP and M118LR calibration rings standard.



1.1-4 x 24 Zenith Short Dot

Second focal plane reticle, smaller illuminated dot. M855, 75 gr. TAP and M118LR calibration rings included.

Police/Marksman II



3-12 x 50

Highly versatile magnification range. Wide field of view at low power, long-range capability at 12x.



3-12 x 50 LP

Our unique color-coded elevation turret, parallax compensation and illuminated reticle all standard.



3-12 x 50 Military

The riflescope chosen by the U.S. Marine Corps as standard equipment Scout Sniper Day Scope.



4-16 x 42 LP

Designed at request of U.S. military. Includes color-coded elevation turret, illuminated reticle and parallax adjustment.



4-16 x 50

A larger objective lens provides even better poor light performance. Several configurations offered.



4-16 x 50 LP

Illuminated reticle and parallax adjustment standard. Color-coded LP elevation turret.



5-25 x 56 LP

True 2000-meter capability. Parallax adjustment standard. First or second focal plane reticles available.



5-25 x 56 Locking MTC

Built at the request of the U.S. military for precision sniping to 1500m and beyond. Includes locking turrets.



12-50 x 56 P

The ultimate scope for extreme ranges and maximum light transmission. Specialized reticles available.

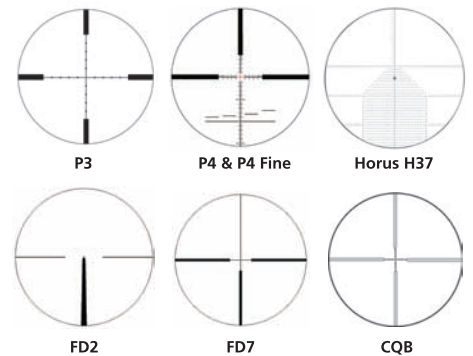


10 x 42

Simple, rugged, economical, and easy to operate in high-stress situations. Low profile, built on 30mm tube.

Reticles

Several different and highly sophisticated reticles are available with our PM II scopes, depending upon the model. Each is designed for specific applications and for maximum performance relative to the scope in which they are offered. Beginning in 2010, Horus Vision and other new reticles will be available in select models. For detailed measurements and further information call or contact us via email at info@schmidtbenner.com.



Specs

	Overall length (in/mm)	Weight (oz/gr)	Reticles
1-8x24	12.1/308	23.0/655	P3/H58
1.1-4x20 SD	10.5/267	18.4/522	CQB/FD7
1.1-4x20 LSD	10.5/267	20.0/567	CQB
1.1-4x24 Zen	10.0/254	18.4/522	FD2/FD7/FDP3
3-12x50	13.5/343	28.5/808	P3
3-12x50 LP	13.5/343	29.4/884	P3/P4/P4F
3-12x50 Mil	13.5/343	30.9/876	P4F
4-16x42 LP	15.5/394	30.4/862	P3/P4F
4-16x50	15.5/394	31.0/879	P3
4-16x50 LP	15.5/394	32.4/919	P3/P4F
5-25x56 LP	16.4/417	39.1/1109	P3/P4/P4F/H37
5-25x56 MTC	16.4/417	40.5/1150	H37
12-50x56 P	16.5/419	39.4/1117	FF=P4F SF=Sport
10x42	13.3/338	20.0/567	P3



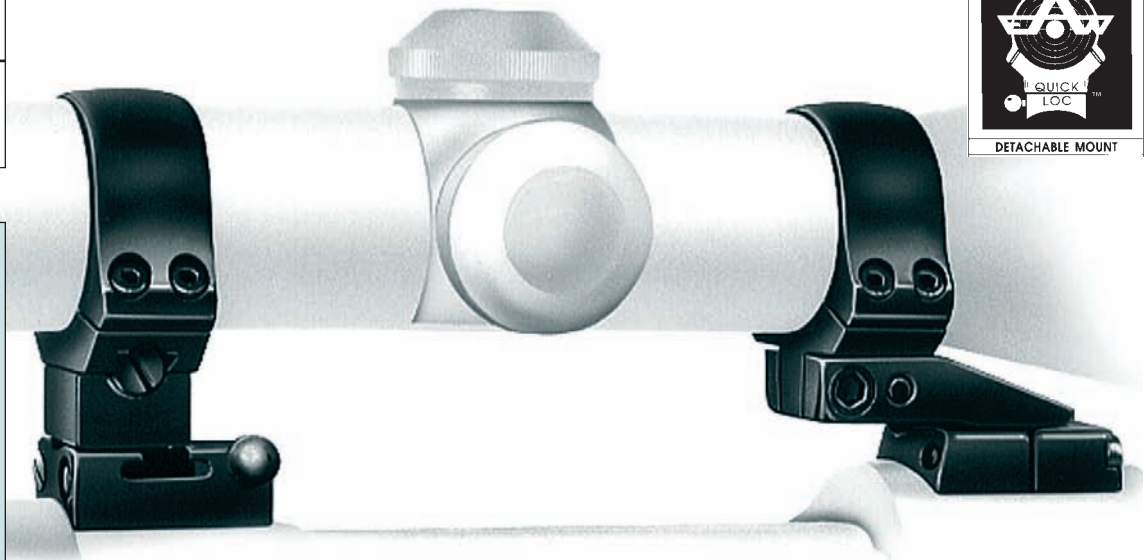
Our unique color-coded knob offered on LP models provides a graphic illustration of where the scope's current elevation setting is located within the overall adjustment range. This solves the problem inherent to many tactical scopes of the shooter becoming "lost" within an adjustment range requiring several turns of the elevation knob. Other models include the More Tactile Click (MTC) turret with or without pop-up indicators.

MOUNTS

MADE IN GERMANY



DETACHABLE MOUNT

**EAW Quick Loc Mount**

The EAW "Quick-Loc" mount is a precision made all steel mount that provides the user with front ring leveling adjustment and rear ring windage adjustment, as well as exchangeable elevation blocks to allow for stress free mounting with the bore. No more shimming. The scope can be removed for access to open sights, to pack in luggage during travel, and to snap in a different scope

for changes in hunting conditions or game sought, effectively turning one gun into two. Its design will allow for 100% repeatability for dependable performance. Having installed EAW mounts for over 20 years we feel confident that you will be completely satisfied. Rings available in 1"/26mm, 30mm and 34mm. For more information you can visit our website or EAW at www.eaw.de.

We stock:

Beretta
Mato
BRNO
Browning
A-Bolt Mauser, BAR, BLR
Dakota
76, 97
FN
Mauser
Heym
Express
SR20, 30
Marlin
336, 444, etc.
Mauser
98, 98 w/bulb
94, 96
Remington
700, 7, 742
7400, 7600
Sako
all Hunting
TRG-21
Sauer
80/90
200, 202 Base
Savage
110, 99
Shilen
Steyr
M-S, L,M,S
SSG, SBS
Weatherby
MK V, Jr
Winchester
Mod 70 3-hole spacings, 88
Other bases available:
Blank bases
Blaser
BSA
Carl Gustav
Chapuis
Krico
Krieghoff
Parker Hale
Santa Barbara
Schultz & Larsen
Tikka
Voere
Walther
11mm dovetail
16mm dovetail
19mm dovetail
and others!

**The proper
mounting system
for your rifle
and your scope**

To receive the proper mount for your rifle, please provide the following:

- Make, model and caliber of your rifle
- Mod 70 owners, is your rifle "pre-64", "post 64" or new "Classic"?
- Make and magnification of your scope
- Tube and objective lens diameter

EAW Quick-Loc Detachable Mount & EAW Magnum Fixed Mount**Group A:**

A-Bolt, Dakota, FN Mauser,
Rem 700, Wby Mark V, Win 70
1"(26mm)
30mm

Group B:

Mannlicher-Schoenauer, Mauser 66
1"(26mm)
30mm

Group C:

All other models or other heights
1"(26mm)
30mm
34mm

Quick-Loc Magnum

E-A1Q
E-A30Q

E-B1
E-B30

E-C1
E-C30
E-C34Q

E-A1F
E-A30F

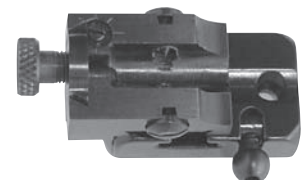
E-C34F

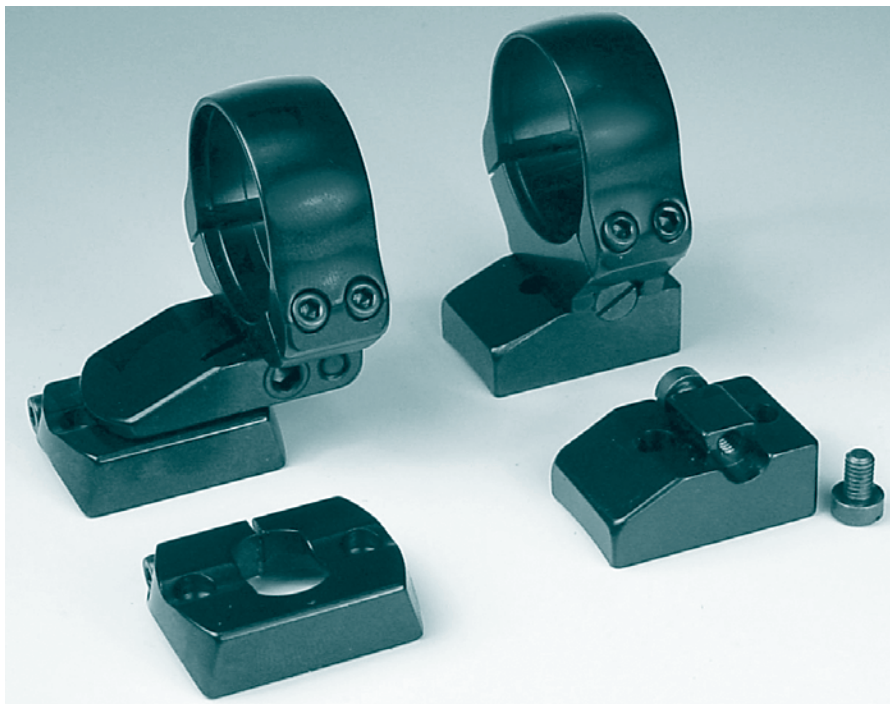
Quick-Loc Components

Pair of mount bases **E-110**
Pair of 1" (26mm) rings **E-100**
Pair of 30mm rings **E-300**
Pair of 34mm rings **E-340**

Receiver sight (Peep)

For EAW "QL" rear bases.
Locks into rear base w/.093"
and .125" discs. **N-105**
Base not included.





EAW Magnum Fixed Mounts

The EAW Magnum Fixed Mount, designed by NECG, is a solid steel mount for use with large scopes on magnum rifles. The system utilizes the adjustable front ring and base found on the EAW Quick-Loc, while the rear base consists of a dovetail onto which the rear ring slides, providing adequate shear strength. The rear ring is held in place by two windage screws and different rear ring heights are available to eliminate the need for shimming or refitting of bases. Other fixed scope mounts lack this adjustability and strength when used with many of today's magnum calibers.

EAW Magnum Fixed Mount Available Models:

Browning A-Bolt

FN Mauser

Dakota 76

Remington 700

Steyr Classic

Steyr Forester

Pro Hunter

Weatherby

Winchester 70 pre-64

Winchester 70

Magnum pre-64

Winchester 70 XTR

Blank Bases

Features

Oversize rotary and rear ring dovetails

Leveling adjustment for front ring

Rear ring available in various heights and with built-in windage adjustment

Three ring heights

Front rings with four extension lengths

Bases and rings are adjustable

Benefits

=Strong enough for the heaviest calibers and scopes

=Stress free mounting for optimal accuracy

=Reticle can be centered for optimal optical performance of your scope

=Will accommodate various size scopes

=Allow for proper eye relief

=No looseness, ever

TIPS!

When asked for scope mount recommendations: A well constructed quality scope mount will work as long as proper mounting is done. When installing the bases, check to see they are level or parallel with each other and they fit the action's contour. If the scope was previously mounted, re-center the scopes elevation and windage adjustments. After rings have been attached, collimate or boresight before completely tightening the rings. When boresighting, the bases may need to be refit to correct the scopes windage and elevation with the bore. Lapping the rings can be done, but should not be necessary if properly aligned. We often hear that a "scope has run out of adjustment". Actually the scope was misaligned and does not have enough adjustment to correct the problem.

Determining Scope Ring Height

What height rings and bases will I need to mount my scope?
 Example: Mounting a Leupold 3-9x40 on a Winchester Model 70. First measure the scope and take the actual outside objective diameter and subtract the main tube diameter. Divide the remainder by 2. This will equal the height from the bottom of the main tube to bottom of the objective bell. Leupold outside objective diameter 1.83" - 1.00" (tube Diameter) = .830" divide by 2 = .415" or 10.5mm. Now with a combined scope base and ring height of .415", you will be mounting the scope with its objective bell level to the top of the action or receiver. For a lower mount you must determine how much lower the objective bell can be mounted below the top of the action and subtract this from .415". Keep in mind that this does not determine bolt handle and /or safety clearance.

8

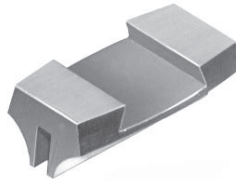
German
Claw

German Claw Mounts

MOUNTS



Front Rings



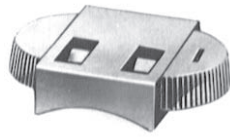
Rear Rings

Drilling Base

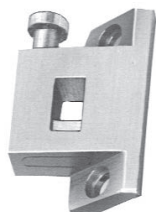


Saddle Bases

Sweat on Ring Base



Rear Bases with Lock up



Mannlicher-Schoenauer Rear Ring and Base



Traditional German Claw Mounts

German claw mounts have been the traditional mount ever since scopes were first used for hunting. They are still the mount of choice on double rifles, drillings and combination guns, as well as on custom magazine rifles and unique rifles like the Mannlicher Schoenauer. There are few mounts that allow a scope to be removed and re-installed as quickly as on the German claw mount. This mount also has the most reliable return to zero. Claw mounts are not interchangeable! **Each mount must be individually fitted to close tolerances. This requires the skill of an experienced gunsmith and since the work is time consuming, these mounts can be the most expensive.** Beware of a "cheap job" as it will probably not be worth having. A great variety of rings and bases are available for fitting to most sporting

guns and new rings can be fitted to existing bases where the scope was lost. In choosing a scope, it is very important to remember that due to the way the scope is removed (by lifting it up in the rear) it should not protrude too far past the front ring. In other words, the front ring must be located close to the front end of the scope. This, as well as eye relief, must be taken into account when choosing a scope. It is best if you let your gunsmith advise you on the most suitable scope and mount components. To install a claw mount we must have the scope which will ultimately remain on the gun. When installing a scope on a double rifle which is not regulated for a scope, we often find that although you can see better, the gun may shoot differently than with open sights. Re-regulation could be required at an additional cost.

MOUNTS



G9-PLUS lock up

Recknagel Classic Steel Mount

Our detachable "Classic Steel Mount" combines appealing design with high tech manufacturing to give the shooter a rugged and dependable scope mount with absolute repeatability. The all steel construction features an extra low height and a rear dovetail base that provides the lowest scope mounting option along with ample eye relief for magnum rifles. Available in 1" or 30mm our unique system

incorporates split steel rings and an oblong post that connects the rear wing with our proven "G9-PLUS" rotary lock up insuring that the ring cannot rotate or loosen. The adjustable leveling feature properly aligns the scope with the bore of the gun eliminating the need to re-fit or shim the bases. All mounts are complete with bases and rings and detailed instructions on their assembly.

The proper mounting system for your rifle and your scope

To receive the proper mount for your rifle, please provide the following:

- Make and model of rifle (i.e.: Winchester Model 70 Pre-64)
- Caliber of rifle (i.e.: .300 Winchester Magnum)
- Scope (i.e.: Schmidt & Bender 3-12x42)
- Tube diameter (i.e. 30 mm)

Reduce the height of your mount to a minimum

Mauser K98	.420"/10.7mm
Rem. 700/ Weatherby Mark V	.440"/11.2mm
Sauer 202	.500"/12.7mm

Available for:

BRNO
Fox 465, ZKB680, CZ527
ZKK600, CZ550
ZKK601, 537 Luxus
ZKK602 Magnum

Dakota

76

FFV

Carl Gustaf 2000, 3000
Carl Gustaf 4000

FN

A-Bolt
Eurobolt
European

H&K

SLB 2000

Heym

SR21, SR30

Kimber

Mauser

M94, M96
M96, M97,
K98

Remington

700, 7,
7400, 7600

Sako

Vixen 75
Forester,
Finnbear,
Finnwolf

Sauer

80/90
200, 202

Savage

Flat top,
Round top

Steyr-Mannlicher

SBS 96 Export,

Tikka

55, 65,
558, 658,
590, 690,
595, 695

Verney-Carron

Weatherby

MK V

Winchester

70 pre-64
70 post-64
Magnum pre-64
Magnum post-64

Ask for other models!

10

Special
Mounts

MOUNTS



Mounts for Rail Scopes

EAW Quick-Loc for Zeiss Rail
EAW Quick-Loc for Traditional
Available for Schmidt & Bender,
Doctor and Swarovski rail
scopes

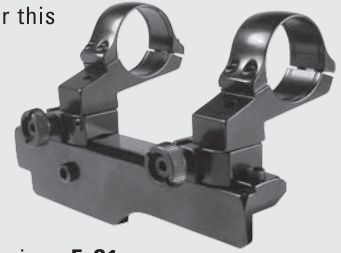


The standard "Quick-Loc" mount can be ordered with attachments to mount a European Rail scope or a Zeiss scope with "Zeiss Rail System". These mounts must be "special ordered". Please call with the following information: Make, Model and Caliber of gun, as well as, the make and model of scope to be mounted.

Call for more details.

Scope Mount for Swiss K-31

No gunsmithing is required for this clamp on mount. Scope rings mount onto the base rail and extend laterally. All steel construction. Rear ring has windage adjustment.



Complete mount with 1"/26mm rings **E-S1**
Complete mount with 30mm rings **E-S30**

Mounts for BRNO/CZ Rifles

Detachable pivot mount with lever for BRNO ZKK 600, 601, 602 and CZ 537, 550 rifles. Available in 1"/26mm and 30mm. Front base requires drilling and tapping for two 6-48 screws. The rear ring will lock directly onto the receivers rear dovetail with a unique adjustable lever system. Rear ring equipped with windage adjustment.



Complete mount with 1"/26mm rings **E-Z1**
Complete mount with 30mm rings **E-Z30**

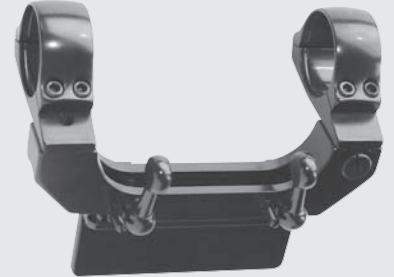
Slide on Rings

We offer scope rings for BRNO, SAKO 75, SAKO TRG, STEYR SSG and also guns with Weaver style bases. Rings available in 1"/26mm, 30mm and 34mm.
Call for more details.



Side Mounts

All steel double lever mount with windage adjustment under rear ring. Height of scope tube above receiver ring. **.788"/20mm.**
1"-E-C1



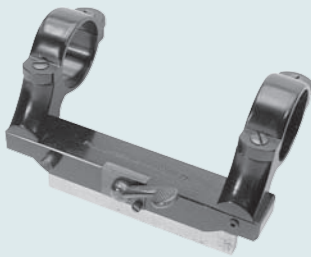
30mm-E-C30

Available for:

Mauser 98, Mauser, small ring, Ruger Mini 14, Steyr Mannlicher Schoenauer, US M1, Winchester 94

Jaeger Side Mount

The Jaeger Side Mount has a steel base, aluminum rings and slide. It locks up with a single lever, combined with a



lock plunger to prevent accidental loss of removable part. Scope can be mounted low and be quickly removed for open sights or receiver sight. Low base only for bolt action rifles. Underside flat, no holes. Base must be prepared and installed by a gunsmith. Complete mount with 1" rings and blank base **J-200**
Specify make and model of gun & scope when ordering.

Top Mounts for Ruger M-77

All steel construction. Front base cradles Ruger base. Rear ring with windage adjustment locks to Ruger rear base with lever and plunger lock. Requires drilling & tapping 2 holes for front base.
1"-E-C1
30mm E-C30



Mounts for Mannlicher Schoenauer

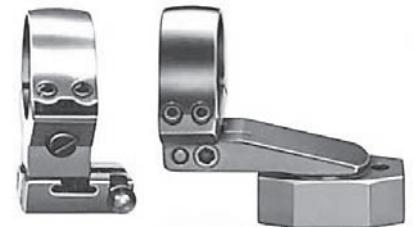
All steel construction. Front base requires drilling and tapping 2 holes in the front receiver ring. Rear base mounts to left side of split rear bridge. One height only (wing safety clears scope tube).



1" E-B1
30mm E-B30

Quick-Loc Mount for Mauser 66

All steel construction. Front base cradles mounting rail on barrel. Rail must be drilled and tapped. Rear base fits existing holes. Specify caliber.
1" E-B1
30mm E-B30



34mm Rings and Blank Components

11

34mm
Rings &
Blank
Components

MOUNTS



34mm two-piece all-steel mount by Dave Talley for Remington Model 700

Attractive steel mount. Rings held securely in place by recoil shoulders in the bases. Overall height 1" (25.4mm) to center of scope tube. For Remington 700 only.

Not for use with S&B 3-12x50 PMII LP



Blank Scope Mount Rings

For the custom gunsmith who wants to create his own mount. Machined from high grade steel, polished, not blued.

Base Dimensions:

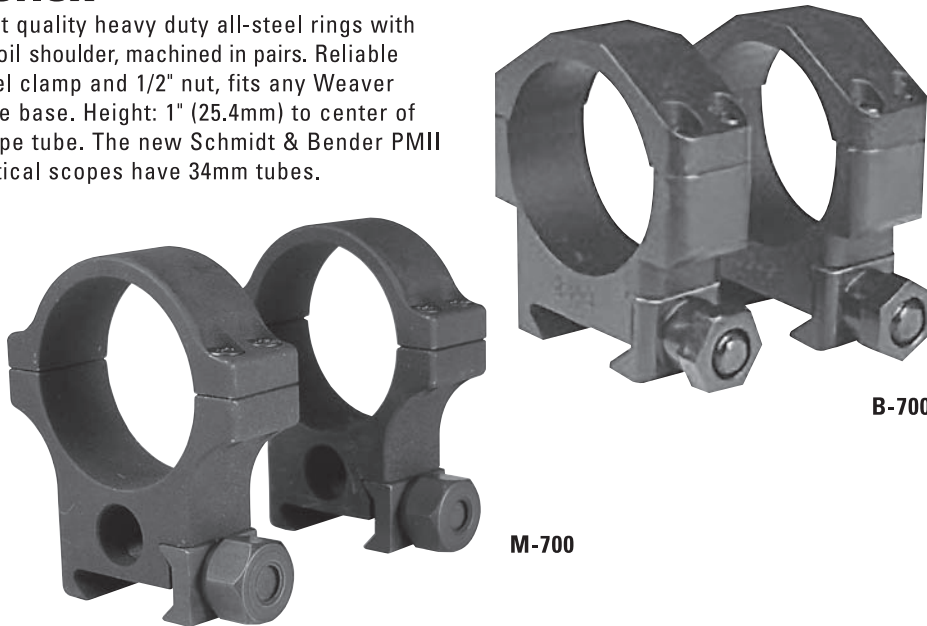
Width: .940"/24mm
Length: .595"/15mm
Height: 1.063"/27mm

Diameter

.875"/22mm **E-500-078**
1"/26mm **E-500-001**
30mm w/2 screws each side **E-500-030**
30mm w/3 screws each side **E-501-030**

34mm Tactical Scope Rings by Badger Ordnance Near Manufacturing and Precision Reflex

Best quality heavy duty all-steel rings with recoil shoulder, machined in pairs. Reliable steel clamp and 1/2" nut, fits any Weaver style base. Height: 1" (25.4mm) to center of scope tube. The new Schmidt & Bender PMII tactical scopes have 34mm tubes.



Blank EAW Bases

The bases allow you the gunsmith to install the well proven EAW mount on just about any rifle. Length: 1.260"/32mm Height, front: .354"/9mm Rear: .394"/10mm

Front base **E-404**
Rear Base **E-405**



Picatinny Rails by Badger Ordnance

This Picatinny spec. one piece mount is machined from 4142 pre-hardened (28-32rc) steel. It has a Mil-Std-1913 slot pattern for more mounting options and a 20 MOA forward cant

for extended range. Uses Badger Ordnance, Precision Reflex or any "picatinny" compatible ring. Left handed versions available, call for details. Select action make and style when ordering.

B-720 Remington 700 Short Action
B-725 Remington 700 Long Action
B-730 Winchester 70 Short Action
B-735 Winchester 70 Long Action

Masterpiece Banded Ramp

SIGHTS

**Masterpiece Banded Front Ramp
with Interchangeable Beads**

The Masterpiece Banded Ramp is widely used by custom makers all over the world. It's all steel construction and graceful styling make it the first choice of many customers. The ramp will accept all of the Masterpiece Banded Ramp front sight inserts,

including silver beads, partridge, fiber optic and folding night sights with both traditional mammoth ivory inserts, and the new "white on white" folding night sight. The hood is locked into position by a spring loaded detent button. Delivered in the white and requires gunsmith installation.

Inside diameter is cylindrical and not tapered.

Overall ramp length:
84.75mm / 3.34"

Ramp width:
8.5mm / .335"

Band length:
29.85mm / 1.17"

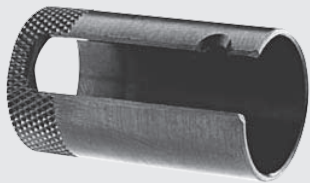
Band wall thickness:
.030"

Note: Inside diameter is cylindrical and not tapered.

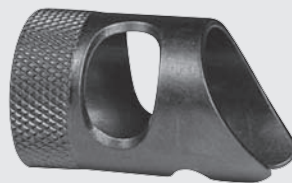
**TIP!**

To create in-between sizes, slip ramp over a used barrel, tap on with a plastic hammer and stretch band with blows from a smooth, flat hammer. Keep tapping back until you have the proper diameter. Allow 1/8" to 3/16" of movement for press fit applications. Grind of hammer marks with belt sander, polish and blue. Drive back making sure that top of ramp is level. Install and tighten set screw. You can simply friction fit, use Loctite or epoxy and or soft solder the ramp in place.

Code	Inside Diameter (A)		Height to Dovetail (B)	
	Inches	mm	Inches	mm
R-100-551	.551	14.0	.500	12.7
R-100-571	.571	14.5	.421	10.7
R-100-590	.590	15.0	.421	10.7
R-100-610	.610	15.5	.421	10.7
R-100-630	.630	16.0	.421	10.7
R-100-650	.650	16.5	.421	10.7
R-100-670	.670	17.0	.386	9.8
R-100-689	.689	17.5	.386	9.8
R-100-708	.708	18.0	.386	9.8
R-100-728	.728	18.5	.386	9.8
R-100-748	.748	19.0	.362	9.2
R-100-768	.768	19.5	.362	9.2
R-100-788	.788	20.0	.362	9.2
R-100-827	.827	21.0	.362	9.2

**Hoods**

Code	Inside Diameter
R-106-551	.551"-14mm
R-106-630	.630"-16mm
R-106-708	.708"-18mm

**Window Hood
with Sweep**

.630"-16mm R-120

**Dovetail Cutter**

For detachable beads. For use in your own ramps, using our front sights.
P-125

SIGHTS

Classic Ramp with Folding Hood



The Classic Ramp with Folding Hood is a modern version of a period style sight ramp that dates back to the days of the early express rifles with its flat back tapered ramp and folding hood.

The ramp will accept all of the same interchangeable front sight inserts used in their popular Masterpiece Banded Ramp which includes silver beads, fiber optic, partridge and folding night sights. The ramp can be modified to suit the taste or style of any rifle. The hood components have a blue oxide finish and the ramp is delivered in the white ready for fitting.

Code	Inside Diameter (A)	
	Inches	mm
R-170-590	.590	15.0
R-170-610	.610	15.5
R-170-630	.630	16.0
R-170-650	.650	16.5
R-170-670	.670	17.0
R-170-689	.689	17.5
R-170-708	.708	18.0
R-170-728	.728	18.5
R-170-748	.748	19.0
R-170-768	.768	19.5
R-170-788	.788	20.0
R-170-866	.866	22.0
R-170-945	.945	24.0

Interchangeable Front Sights

Base: 22mm-.866" Long: 5.25mm-.207" Wide:2mm-.079" thick

		Overall Height mm/inch (When ordering, specify size.)							
		4.5mm/.177"	5.0mm/.197"	6.0mm/.237"	6.5mm/.256"	7.0mm/.276"	8.0mm/.315"	9.0mm/.355"	10.0mm/.394"
S1		R-101-177	R-101-197	R-101-237	R-101-256	R-101-276	R-101-315	R-101-355	R-101-394
S2				R-102-237	R-102-256	R-102-276			
S3					R-103-256	R-103-276	R-103-315	R-103-355	R-103-394
S4					R-104-256				
S5					R-105-256	R-105-276	R-105-315	R-105-355	
S5					R-140-256	R-140-276	R-140-315	R-140-355	
S6					R-104-W				
S7					6.5mm R-123-256	7.5mm R-123-295	8.5mm R-123-335	9.5mm R123-375	
S8					R-124-256	R-124-295	R-124-335	R-124-375	

Universal Front Sights

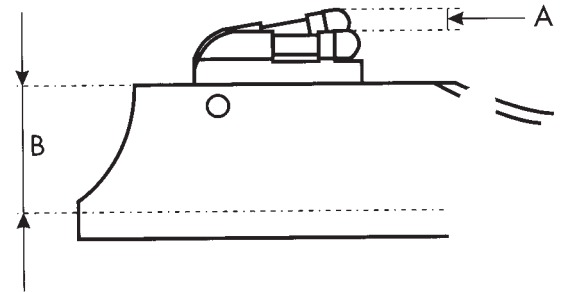
SIGHTS



Universal screw on ramps

- Easy to Mount
- Easy to adjust
- Easily interchangeable
- Rear attaching, lockable hood
- 5 Ramp heights
- 3 Bead heights
- 6 Bead styles
- 3 Hood sizes

Hood to lock in place with set screw



A = 3 different bead heights each with up to .060" of ELEVATION ADJUSTMENT
 B = 5 different ramp heights to fit virtually any height requirement
 1 ramp height and 3 bead heights allows up to .100" of total ADJUSTMENT with 1 sight.

Code	Universal Ramp Inches (mm)	Front Sight	Combined Mid-Height		Combined Lowest		Combined Highest	
			Inches	mm	Inches	mm	Inches	mm
R-107-385	Low .385 (9.8)	Low	.592	15.1	.562	14.3	.622	15.8
		Medium	.611	15.5	.581	14.8	.641	16.3
		High	.631	16.1	.601	15.3	.661	16.8
R-107-455	Medium .455 (11.6)	Low	.662	16.8	.632	16.1	.692	17.6
		Medium	.681	17.3	.651	16.6	.711	18.1
		High	.701	17.8	.671	17.1	.731	18.6
R-107-525	High .525 (13.3)	Low	.730	18.5	.700	17.8	.760	19.3
		Medium	.750	19.0	.720	18.3	.780	19.8
		High	.770	19.5	.740	18.8	.800	20.3
R-107-595	Extra High .595 (15.1)	Low	.802	20.4	.772	19.6	.832	21.1
		Medium	.821	20.9	.791	20.1	.851	21.6
		High	.841	21.4	.811	20.6	.871	22.1

Bottom radius is .2813"-7.13mm (.562 diameter) which can be fitted to other diameter barrels.



Hoods for Universal Ramps

Hoods have a knurled front end. They protect the front sight but let in the light so you can see your sight.

Small: .550"(14) **R-109-550**
 Medium: .630"(16) **R-109-630**
 Large: .708"(18) **R-109-708**
 Window: .630"(16) **R-110-630**

For the lowest ramp only one size hood, medium, is available and attaches to the front.

Universal interchangeable front sights

Universal Front Sights

Code	Style	Size		
			Inches	mm
R-108-245	Silver Bead	Low	.080	2.0
R-108-250		Medium		
R-108-255		High		
R-108-345	Partridge Sight	Low	.099	2.5
R-108-350		Medium		
R-108-355		High		
R-108-545	White Bead	Low	.099	2.5
R-108-550		Medium		
R-108-555		High		
R-108-645	Fiber Optic Bead	Low	.060	2.5
R-108-650		Medium		
R-108-655		High		
R-108-745	Large Fiber Optic Bead	Low	.158	4.0
R-108-750		Medium		
R-108-755		High		
R-108-845	Large White Bead	Low	.158	4.0
R-108-850		Medium		
R-108-855		High		

Front Sight Ramps

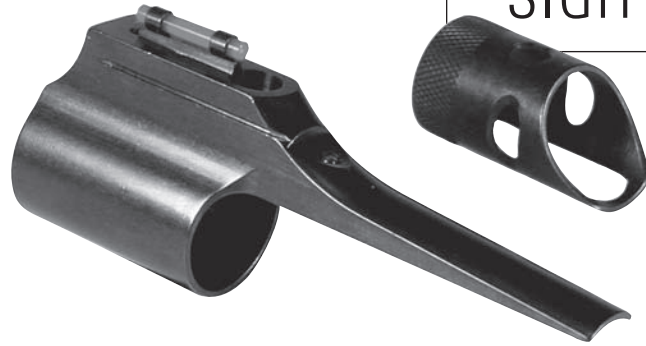
15

Front Ramps

SIGHTS

Universal Banded Ramp

When we combined the classic good looks of our popular Masterpiece Banded Ramp and the adjustability of the Universal Front Ramps we came up with the "UNIVERSAL BANDED RAMP". Inside diameter is straight, not tapered. Requires installation by a gunsmith. All the ramps are 11mm high. Please refer to the following chart for the overall height from the top of the barrel to determine the proper bead to order from page 14.



Ramps	Inside Diameter	
Code	Inches	Mm
R-130-610	.610	15.5
R-130-650	.650	16.5
R-130-670	.670	17.0
R-130-690	.690	17.5
R-130-708	.708	18.0
R-130-748	.748	19.0
R-130-768	.768	19.5

Overall heights and adjustment range of different beads									
Bead Height	Setting	2mm Silver		2.5mm White F.O.		Partridge		4mm White F.O.	
		Inches	mm	Inches	mm	Inches	mm	Inches	mm
LOW(4.5mm)	Lowest	.620	15.8	.615	15.6	.610	15.5	.600	15.2
	Mid-Point	.650	16.5	.645	16.4	.640	16.3	.630	16.0
	Highest	.680	17.3	.675	17.2	.670	17.0	.660	16.8
MED(5.0mm)	Lowest	.640	16.3	.635	16.1	.630	16.0	.620	15.8
	Mid-Point	.670	17.0	.665	16.9	.660	16.8	.650	16.5
	Highest	.700	17.8	.695	17.6	.690	17.5	.680	17.3
HIGH(5.5mm)	Lowest	.660	16.8	.650	16.5	.650	16.5	.640	16.3
	Mid-Point	.690	17.5	.680	17.3	.680	17.3	.670	17.0
	Highest	.720	18.3	.710	18.0	.710	18.0	.700	17.8

Holland & Holland Style Front Sight Ramps

The well made banded and screw on ramps bring back the traditional Holland & Holland style night sight. Flip forward to expose a .0781" silver bead. Flip back for use of the .150" diameter mammoth bead for poor light or close-up hunting. The .040" thick band can be stretched for a perfect fit.

Overall length: 3.350"(85mm)

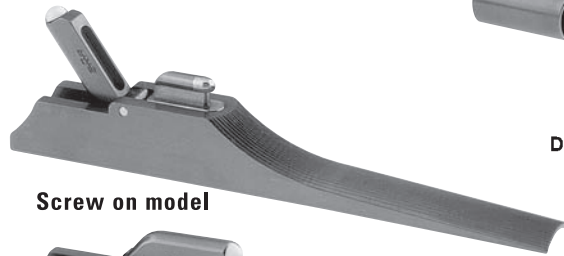
Band length: 1.180"(30mm)

Inside diameter is straight, not tapered.

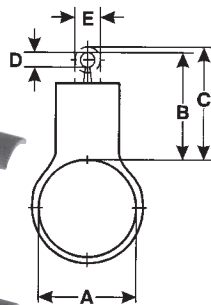
Model	screw on		banded		banded		banded		banded	
	Inches	mm	Inches	mm	Inches	mm	Inches	mm	Inches	mm
A	.2813	rad.	.590	15.0	.650	16.5	.709	18.0	.748	19.0
B	.669	17.0	.630	16.0	.630	16.0	.630	16.0	.630	16.0
C	.709	18.0	.669	17.0	.669	17.0	.669	17.0	.669	17.0
D	.080	2.0	.080	2.0	.080	2.0	.080	2.0	.080	2.0
E	.158	4.0	.158	4.0	.158	4.0	.158	4.0	.158	4.0
	R-111-610		R-112-590		R-112-650		R-112-709		R-112-748	



Banded model



Screw on model



Basic Ramps & Hoods

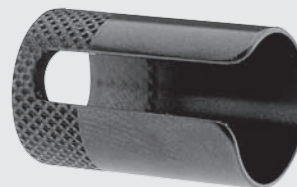
These ramps come with a dovetail for the beads listed on page 9 and grooves for the hoods listed below. They can be soldered or screwed on, and styled to your taste. These hoods fit the ramps below, have a knurled front, are blued and come in three diameters.



Front ramp, rounded



Front ramp, flat



- .551"-14mm R-115-550
- .630"-16mm R-115-630
- .708"-18mm R-115-708

Front ramp, with round top tail R-113

Front ramp, with flat top tail R-114

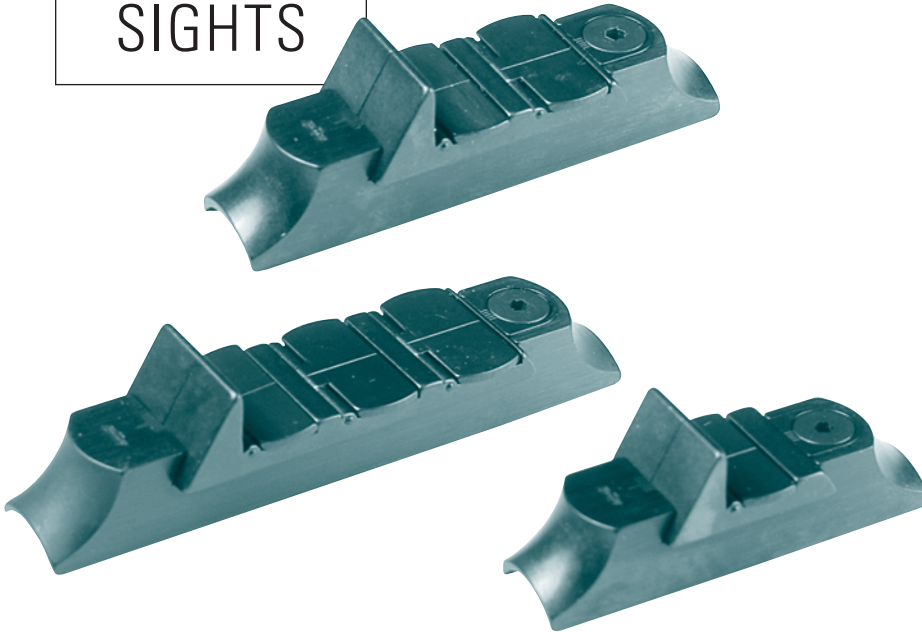
Overall length: 3.543"-90mm
Underside: .315" Radius or fits .630" diameter barrel

16

Rear Sights

Rear Sights

SIGHTS



Classic Express Sight with Island Base

Fitting an express sight into its base is not an easy task. It must be moved sideways when sighting in, but must never come loose thereafter. The express sights in this combination are fitted so they can be tapped sideways but are absolutely tight when clamp screw is tightened with the supplied allen wrench. The sights and bases are attractively shaped, polished and blued. The sight has witness lines on both ends and the base has gradations. Center lines can be filled with white lacquer. Top of the sights are left flat for regulating at the required distances by filing in a wide "V" or "U" notch into them.

Width of base: 14mm

Heights over barrel:

Standing sight: 17mm-.670", First leaf:

16.5mm-.650", Second leaf: 17mm-.670"

Third leaf: 18mm-.709"

Code	Model	For Barrel Diameter		Length of Base	
		From	To	Inches	mm
R-202-S	3 leaf express	.600	.675	3.228	82
R-202-M	3 leaf express	.675	.730		
R-202-L	3 leaf express	.730	.830		
R-202-XL	3 leaf express	.830	.930		
R-203-S	2 leaf express	.600	.675	2.638	67
R-203-M	2 leaf express	.675	.730		
R-203-L	2 leaf express	.730	.830		
R-203-XL	2 leaf express	.830	.930		
R-204-S	1 leaf express	.600	.675	2.205	56
R-204-M	1 leaf express	.675	.730		
R-204-L	1 leaf express	.730	.830		
R-204-XL	1 leaf express	.830	.930		

Unfinished Island Bases



3 Leaf **R-209**

Length: 3.584"-91mm

Height to Dovetail:

.270"-6.85mm



2 Leaf **R-210**

Length: 2.953"-75mm

Height to Dovetail:

.238"-6.85mm



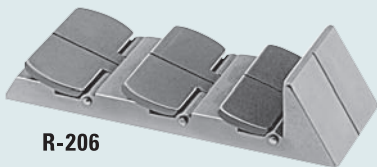
Leaf **R-211**

Length: 2.206"-56mm

Height to Dovetail:

.238"-6.85mm

Unfinished Express Sights with 1, 2 or 3 Folding leaves



R-206

3 Leaf **R-206**

Length: 1.997"-20.72mm

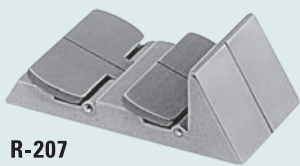
Width: .704"-17.88mm

Standing: .470"-11.93mm

1 leaf: .500"-12.70mm

2 leaf: .500"-12.70mm

3 leaf: .537"-13.64mm



R-207

2 Leaf **R-207**

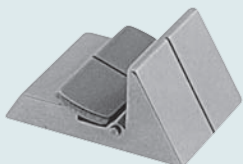
Length: 1.408"-36.75mm

Width: .704"-17.88mm

Standing: .470"-11.93mm

1 leaf: .540"-13.71mm

2 leaf: .540"-13.71mm



R-208

1 Leaf **R-208**

Length: .975"-24.77mm

Width: .704"-17.88

Standing: .470"-11.93mm

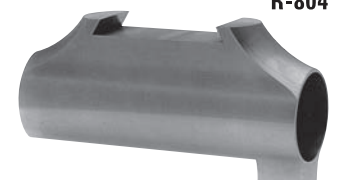
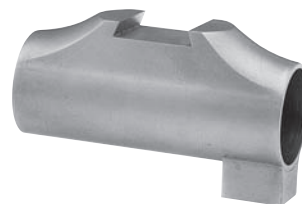
Leaf: .540"-13.71mm

Ring Bases for Rear Sights

Rear sight ring base with recoil shoulder, steel, in the white. Inside diameters from .590"-15mm to .770"-19.5mm in .020"/.5mm increments. Dovetail: .630"-16mm. Overall length: 2.086"-53mm. **R-802**

Rear sight ring base with recoil shoulder, 1.378"-35mm dovetail for 2 leaf express sight, steel, in the white. Overall length: 2.560"-65mm. .827"-21mm inside diameter **R-803**

.846"-21.5mm inside diameter **R-804**



Rear Sights

17

Rear Sights

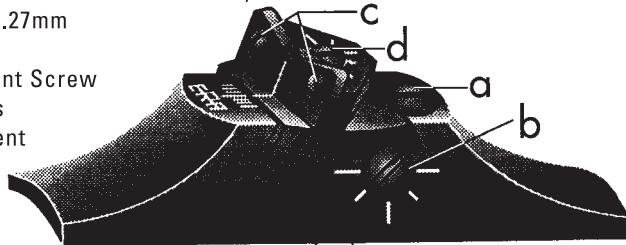
SIGHTS

Masterpiece Fully Adjustable Rifle Rear Sight

Precision machined all steel sight, polished and blued. Attaches with 8-36 socket head screw. Use small screwdriver to adjust windage and elevation.

Magna-tip screwdriver bit N-905
Screw driver handle N-906

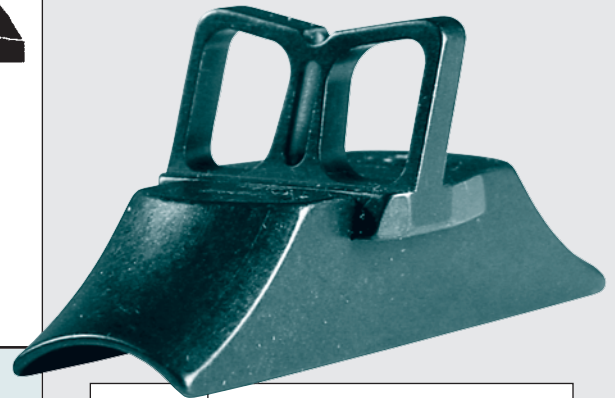
Length: 2.165"-55mm
 Width: .550"-14mm,
 Height in lowest position in notch: .550"-14mm,
 Adjustment up: .050"-1.27mm
 A= Clamp Lock Screw
 B= Windage Adjustment Screw
 C= Blade Lock Screws
 D= Elevation Adjustment Screw



Base Code	Size	For Barrel Diameter			
		From		To	
		Inches	mm	Inches	mm
R-200-675	Small	.600	15.2	.675	17.2
R-200-730	Medium	.675	17.2	.730	18.5
R-200-830	Large	.730	18.5	.830	21.0
R-200-930	X-Large	.830	21.0	.930	23.6

See Thru Fiber Optic Sight with Base

This unique all steel sight with fiber optic centerline and windage adjustment allows for a fast shot without blocking the view of the target. We find that it works well with our "Universal" front sights. Available in 5 different overall heights for 4 different barrel diameter. When ordering, please give Base Order Number with Sight Height number.



Classic Adjustable Rear Sight

Same as our Masterpiece sight but windage is adjusted by pushing sideways, then locking it with a reliable clamp. Precision machined all steel sight, polished and blued, with 6-48 fastening screw and allen wrench, shallow V and U notch. Length: 2.170"-55mm Width: .550"-14mm Height in lowest position to bottom of notch: .550"-14mm Adjustment up: .060"-1.5mm

Base Code	For Barrel Diameter			
	From		To	
	Inches	mm	Inches	mm
R-201-675	.600	15.2	.675	17.2
R-201-730	.675	17.2	.730	18.5
R-201-830	.730	18.5	.830	21.0
R-201-930	.830	21.0	.930	23.6



Base Code	For Barrel Diameter			
	From		To	
	Inches	mm	Inches	mm
R-230-675	.600	15.2	.675	17.2
R-230-730	.675	17.2	.730	18.5
R-230-830	.730	18.5	.830	21.0
R-230-930	.830	21.0	.930	23.6

Sight Code	Overall Sight Heights with R-230 base		Sight Only	
	Inches	mm	Inches	mm
R-205-356	.550	14	.356	9
R-205-394	.590	15	.394	10
R-205-472	.670	17	.472	12
R-205-551	.750	19	.551	14
R-205-630	.825	21	.630	16

Fixed and Folding Rear Sights



Slanted Forward R-213
 Width: .708"-18mm
 Length: .630"-16mm
 Overall Height: .630"-16mm



Straight R-214
 Width: .708"-18mm
 Length: .630"-16mm
 Overall Height: .630"-16mm



Sweat-on Base for Both Sights R-217
 Can be screwed on.
 Width: .551"-14mm
 Length: 2.000"-51mm
 Height: .060"-1.5mm

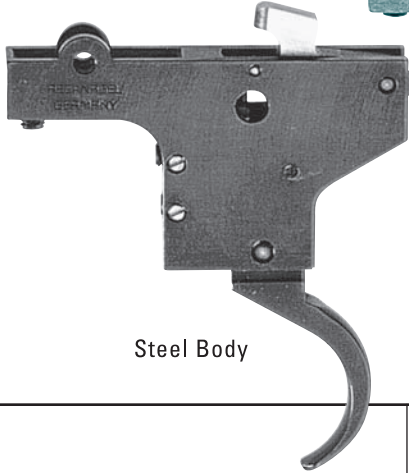


Folding R-215
 Width: .750"-19mm
 Length: .620"-15.75mm
 Overall Height: .550"-13.9mm
 Folding: .608"-15.4mm

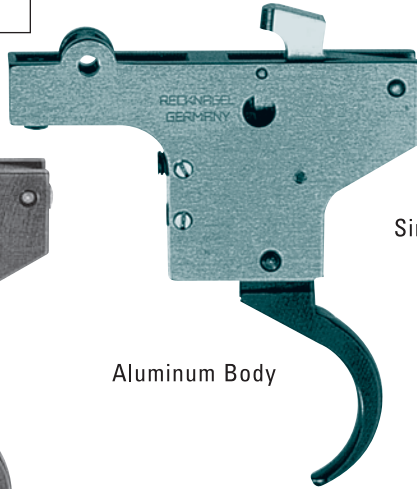
18

Triggers
Safeties

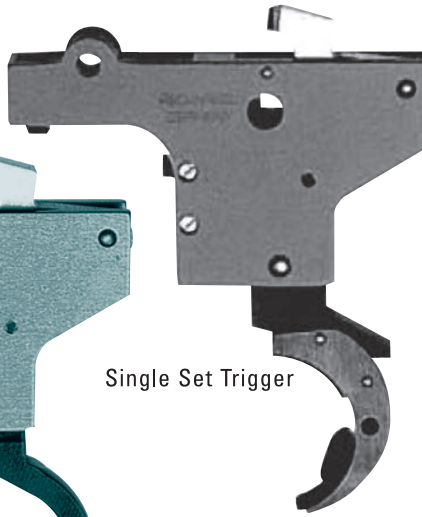
TRIGGERS



Steel Body



Aluminum Body



Single Set Trigger

Adjustable Triggers for Mauser 98

These fully adjustable Mauser 98 triggers are available in an aluminum steel body and a steel body single set version. These require gunsmith installation. Trigger weight adjusts from 2lbs to 4.5lbs.

Trigger with Steel body
R-416

Trigger with Aluminum body
R-415

Single set Trigger with Steel body
R-417

Traditional Double Set Trigger for Mauser 98

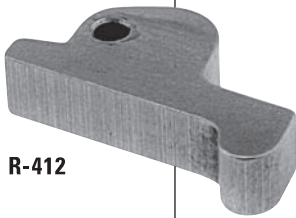
These triggers must be fitted into the Mauser trigger guard, locked in place, and worked over inside the trigger bow. Kick-off must be properly fitted and case hardened.



Traditional R-405



Mauser Style R-404



Kick-off R-412

3 Position Safety for Mauser 98 & Remington 700

The Mauser 3 position safety has an ingenious locking lever incorporated into it which will lock the lever into the 3rd "Safe" position. It is easily released by pushing down on the locking lever as you push the safety into the 2nd position.

Precision machined bolt sleeves with 3-position safety, in the white. Mauser bolt sleeve has a gas shield.

Remington 700 with locking lever
R-429



Mauser 98 Safety with Locking Lever
R-428

Peep Sights

19

Peep Sights

Peep Sights

NECG Peep Sights

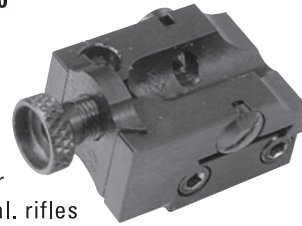
If you are a fan of receiver sights, you will find that these three new offerings from NECG will greatly enhance your experience afield. The Peep Sight for Ruger Rifles (designed for use on the Model 77 and the Nr 1), the Peep Sight for Weaver Style Bases, and the one for Grooved .22 rifle, are all machined from solid steel and each provides excellent sight picture, even for those with less than perfect eyesight. All are supplied with two apertures (.093" and .125") and are fully adjustable for windage and elevation, nor do they require gunsmithing. The Peep Sight for Weaver Style bases comes with two aperture slides for: flat top bases or deep channel bases.



Peep Sight for Ruger Rifles
N-100



Peep Sight for Weaver Style Bases
N-106










Peep Sight for Grooved .22 cal. rifles
N-108



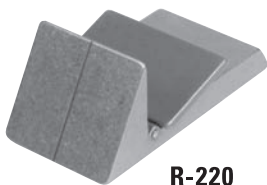
CZ Ghost Ring Peep Sight
CZ550
N-109

Front sight inserts for Ruger and CZ Rifles

An ideal complement to the peep sight is the new White Bead, Partridge, and Fiber Optic Front Sights which replace the standard sights on the Ruger M-77 and No 1 as well as the CZ 550 and 527 rifles. They offer vastly improved visibility, particularly in poor lighting, and make for quicker sight alignment and target acquisition.

	Overall Height mm/inch (When ordering, specify size.)						
		7.6mm/.300"	8.4mm/.330"	8.9mm/.350"	9.5mm/.375"	10.5mm/.415"	11mm/.435"
Ruger .098"/2.5mm White Beads 	R-150-300	R-150-330	R-150-350	R-150-375	R-150-415	R-150-435	
Ruger .098"/2.5mm Fiber Optic Beads 		R-151-330	R-151-350	R-151-375	R-151-415	R-151-435	
Ruger .060"/1.5mm Fiber Optic Beads 		R-153-330	R-153-350	R-153-375	R-153-415	R-153-435	
Ruger .080"/2mm Partridge Sight 						R-152 (can be filed)	
CZ White 	6mm	6.5mm	7.5mm	8.5mm	9.5mm		
	R-160-237	R-160-256	R-160-295	R-160-335	R-160-375		
CZ Fiber Optic 		R-161-256	R-161-295	R-161-335	R-161-375		
CZ Partridge 					R-162-375 (can be filed)		

CZ / Replacement One Leaf Express Sight



R-220

This all steel one leaf Express sight was designed to offer the CZ 550 Safari a simple solution for rear sight replacement. It can also be used when a higher Express sight is needed to replace an NECG "Classic 2 Leaf Express" or "Unfinished 2 Leaf Express" sight that is too low and the point of impact needs to be raised.

Overall length: 1.407"/35.75mm
Standing sight height: .571"/14.50mm
Folding sight height: .697"/17.70mm
Sight body width: .703"/17.85mm
Folding sight width: .827"/21.00mm
Dovetail depth: .173"/4.40mm
 60 degree dovetail

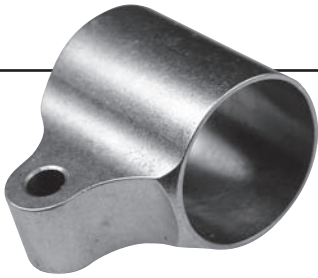
TIP!

Front sight heights: When using one of our NECG peep sights, we suggest first shooting or collimating the peep sight with the original front sight. If you need to change the front sight height or your firearm does not have a front sight, contact your local gunsmith for assistance.

20

Swivel
Studs

SWIVELS



Classic Barrel Band Swivel & Swivel Studs

They are very thin and available with inside diameters from .630"(16mm) to .945"(24mm) in .020"(0.5mm) increments. Swivel studs are available with wood screw studs for the butt and machine screw studs and nut for the forend.

Code	Band Size	Code	Band Size
R-300-630	.630" 16.mm	R-300-810	.810" 20.5mm
R-300-650	.650" 16.5mm	R-300-830	.830" 21.mm
R-300-670	.670" 17.mm	R-300-850	.850" 21.5mm
R-300-690	.690" 17.5mm	R-300-870	.870" 22.mm
R-300-710	.710" 18.mm	R-300-890	.890" 22.5mm
R-300-730	.730" 18.5mm	R-300-910	.910" 23.mm
R-300-750	.750" 19.mm	R-300-930	.930" 23.5mm
R-300-770	.770" 19.5mm	R-300-950	.950" 24.mm
R-300-790	.790" 20.mm		



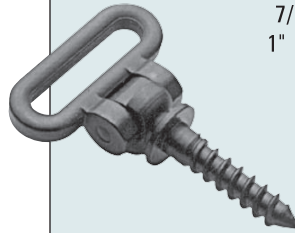
Classic Swivel Stud w/machine screw
R-302



Classic Swivel Stud w/Woodscrew
R-301

**Fixed Swivels
7/8" & 1" Loop**

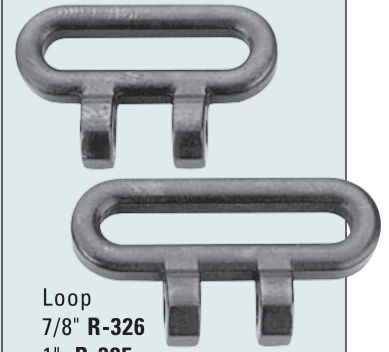
Short Woodscrew Stud
7/8" **R-310**
1" **R-310-1**



Long Woodscrew Stud
7/8" **R-320**
1" **R-320-1**



Screw on with 2 Screws
7/8" **R-314**
1" **R-314-1**



Loop
7/8" **R-326**
1" **R-325**



Machine Screw Stud & Nut
7/8" **R-311**
1" **R-311-1**



Concave Base
R-312
Convex Base
R-313
Flat Base
R-317

**Quick Detachable Swivels
7/8" & 1" Loop**

Quick Detachable Swivels for American Studs (single)
7/8" **M-300**
1" **M-300-1**
Quick Detachable Swivels for European Studs (single)
7/8" **R-316**
1" **R-316-1**



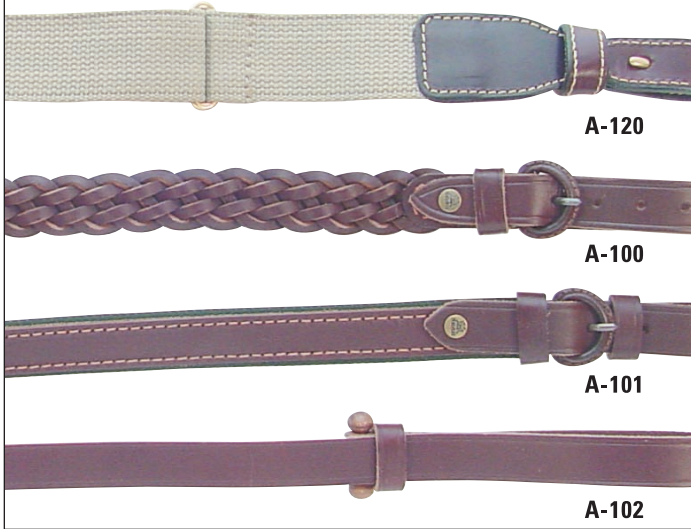
Installation tools (counterbore, drill & tap)
N-930

Mannlicher Style Front Swivel

The proper swivel for a slim Mannlicher style full length stock
R-315



SLINGS
TOOLS



Slings

Classic Rifle Sling

2" wide classic safari sling. The rugged cotton webbing has two rows of silicone rubber strands to prevent slipping. The leather fasteners take a one inch swivel and are secured by a bridle hook and keeper for silence. **A-120**

Braided Leather Sling

Our traditional 7/8" sling is made of best quality leather and braided in such a way, that it will not stretch excessively. **A-100**

Cloth Back Leather Sling

This 7/8" sling is made of best quality leather and lined with green canvas on the underside. **A-101**

Leather Slings

All our leather slings are manufactured by the AKAH Company in Germany using only best quality leather. All buckles are covered with leather.

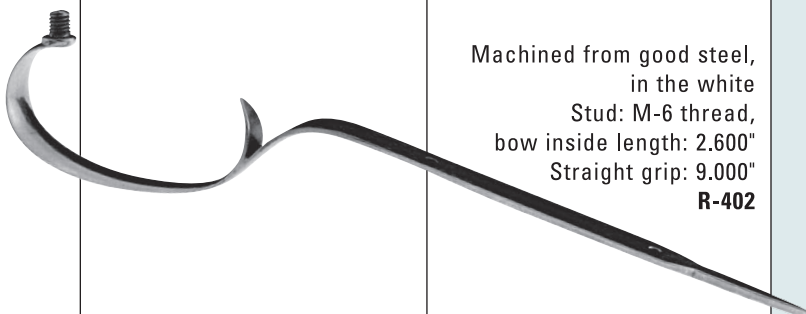
Functional, Quick Shortening Leather Sling.

Our very practical basic leather 7/8" sling can be quickly shortened when the gun is cased or placed in a gun rack. **A-102**

Trigger Guards



Investment casting with good detail, in the white. Stud diameter: .216", bow inside length: 2.540", overall length: 5.125" **R-420**



Machined from good steel, in the white. Stud: M-6 thread, bow inside length: 2.600", Straight grip: 9.000" **R-402**

Tools



Jeweling Tool

For years, we have been looking for a jeweling tool which would not need constant trimming. We found the right material and we want to share it with other gunsmiths. The sleeve fully supports the rod and center screw adjusts the amount of protrusion. The rod can be

trimmed to the desired diameter on a grinding wheel or sander. Use readily available abrasive paste to get uniform results.

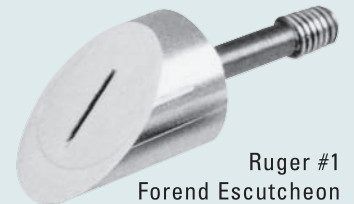
Stainless steel jeweling tool with 3 rods

N-901

Replacement rods, package of three **N-902**

Ruger #1 Forend Escutcheon

An attractive way to cover the opening in a factory or custom made forend. The counterbore will assure a professional installation.



Ruger #1 Forend Escutcheon **N-110**



Counterbore **N-910**



Screwdriver

Handy fold out screwdriver with 4 blades, best quality steel. **R-807**

Blades thickness		Width	
.022"	0.55mm	.160"	4mm
.022"	0.55mm	.200"	5mm
.026"	0.65mm	.236"	6mm
.026"	0.65mm	.315"	8mm

PADS



Size	Height		Width	
	max	min	max	min
Medium	5.40"	4.60"	1.75"	1.50"
Large	5.75"	4.60"	2.00"	1.50"

NECG Recoil Pad
A pad for all seasons
(and all sizes too)

The unique recoil pad system that lets you easily change pads on the same gun. The unique locking mechanism of the **Universal Recoil Pad** lets you quickly attach different recoil pads on the same firearms. Now you can:

Quickly change length of pull for winter and summer use, share a gun with a shooter who needs different length of pull, adjust length of pull for a youth's gun. **The Quick-Loc Mechanism** is precision made, keeping the pad tight and secure. Yet pads can be

changed in seconds! The pad itself is of the highest quality soft rubber for maximum recoil absorption. The classic style features a well-rounded, leather grained face. The face is pre-cut for permanent tear-free attachment with wood screw, without the quick-loc mechanism if desired. Initially being offered in medium and large sizes, they can be ordered in either black, brown or red and are supplied in four thicknesses - .750", 1.00", 1.25" and 1.50". When ordering pad, please include size, color and thickness.
G-101



NECG SportingPad

All the advantages of the Universal Pad combined with a hard plastic heel to help eliminate pad "hang up" during mounting. Initially being offered in medium and large sizes, they can be ordered in either black or brown and are supplied in four thicknesses-.750", 1.00", 1.25" and 1.50". Gunsmiths will find that the hard plastic heel is easily shaped and finished. When ordering, please include size, color and thickness.

G-120

Buttplates and Spacers

Serrated Buttplates

Thickness	Code
.315"-8mm*	G-201-008
.394"-10mm	G-201-010
.787"-20mm	G-201-020
1.180"-30mm	G-201-030

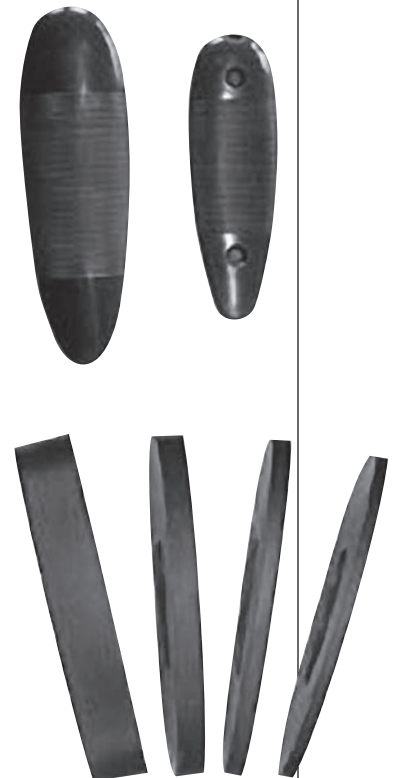
Outside dimensions 5.75"x2

*8mm Buttplate is 5.10" long and 1.57" wide. It is pre-drilled counter sunks.

Hard Rubber Spacers

Thickness	Code
.236"-6mm	G-202-006
.315"-8mm	G-202-008
.475"-12mm	G-202-012
.950"-24mm	G-202-024

Outside dimension 5.75"x2



ACCESSORIES

**Shotgun Handguard**

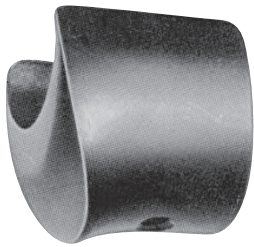
These handguards are made of Latigo leather stitched over spring steel, which keeps it securely in place to protect your hand from the heat of the barrel. Available in 12,16,20 and 28 gauge. **M-401** *specify gauge

Shotgun Snap Caps

Rifle and shotgun snapcaps for many different calipers and gauges.

W-101

For a complete listing, visit our website.

**Muzzle Cap**

Slim Mannlicher Style Muzzle Cap, Blued

.575" ID

.610" ID

R-410-575**R-410-610****Mammoth Shotgun Beads**

Mammoth ivory shotgun beads with 6-48 thread.

4mm-.157"

5mm-.197"

R-400**R-400-1****Traditional Trap Grip Cap**

In the white.

Outside dimensions:

Length: 1.820"-46.25mm,

Width: 1.356"-34.45mm,

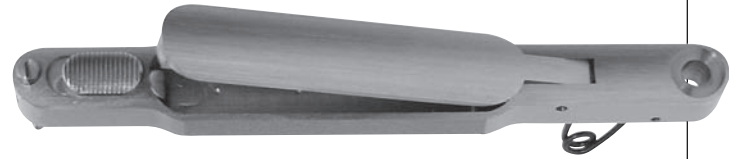
Magazine Depth:

1.025"-26.03mm.

R-406

All steel construction with two screws.

1.820 length, 1.350 width in the white.

R-403**Stock Cartridge Traps**

Flip open model with lock button. Machined from high grade steel, in the white with wood screw for one end. Choose your own swivel or swivel stud. Will hold 4 cartridges. Outside: overall length: 5.050"-128mm, width: both ends: .475"-12mm, middle: .630"-16mm, cavity: length: 2.560"-65mm and width: .550"-9mm.

R-408

Break open model, same dimensions as above.

Standard **R-411**Magnum **R-421**

Old style break open model with curved cover, steel, in the white. Brass plate is attached with four small wood screws, hinge is held into stock with sling swivel of your choice. Overall length 5.9"-150mm, width of lid: .866"-22mm, width of tang: .550"-14mm.

R-407**Stainless Steel Winchester Model 70 Guard Screws**

3 screw set of stainless steel guard screws with 5/32 socket heads sized and shaped to fit and compliment the Stainless Winchester Model 70 actions. Screw length may require shortening to individual actions. (Heads may require slight alteration if being fit to some

custom bottom metal units.)

Each set comes with an Allen wrench. **N-70**



Why an AyA?

TRADITIONAL FEATURES

AyA shotguns include all the features of a traditional English gun, including chopper lump barrels and hand detachable sidelocks. Only the best quality steel is used in the sidelocks, assuring you of crisp trigger pulls that will endure for thousands of rounds.

WIDE RANGE OF OPTIONS

AyA shotguns are available in 12, 16, 20, 28 and 410 gauge and with a wide range of options. The 12, 16 and 20 having 28" barrels while 28 and 410 gauges have 27" barrels. While each AyA can be built specifically to your specifications, lower manufacturing costs make them available at a very reasonable price.

FITTED TO YOUR SPECIFICATIONS

We can fit you at our shop in New Hampshire, or you can send us a gun which fits you well and we will duplicate its dimensions. If standard stock dimensions fit you, we may well have a gun in inventory, as we normally have several gauges and models in stock, with new guns arriving every month. Check with us.

RESPECT AND SATISFACTION GUARANTEED

Of course, all AyA shotguns are completely guaranteed (excluding wood) and we here at NECG do all of the warranty work on the AyA's that we import. As gunsmiths, we look at the things that count in a quality gun. AyA has earned our respect. They will earn yours, too.



Model No 4/53

- Side-by-side hammerless boxlock ejector shotgun
- Double locking mechanism with replaceable hinge pin
- Bushed firing pins
- Double triggers
- Chopper lump barrels with concave rib
- Light scroll engraving
- Automatic safety
- Straight grip oil finish walnut stock
- Silver oval
- Checked butt



Model No 1 deLuxe

- Side-by-side hammerless Sidelock ejector shotgun
- Forged steel action with double locking mechanism and gas vents
- Hardened steel intercepting safety sears
- Gold-plated internal lock parts
- Gold-lined cocking indicators
- Double triggers with hinged front trigger
- Chopper lump chrome nickel steel barrels
- Concave rib
- Best English bold foliate engraving
- Exhibition quality, oil finished walnut stock
- Gold oval
- Automatic safety
- Available with color case hardened or coin finish

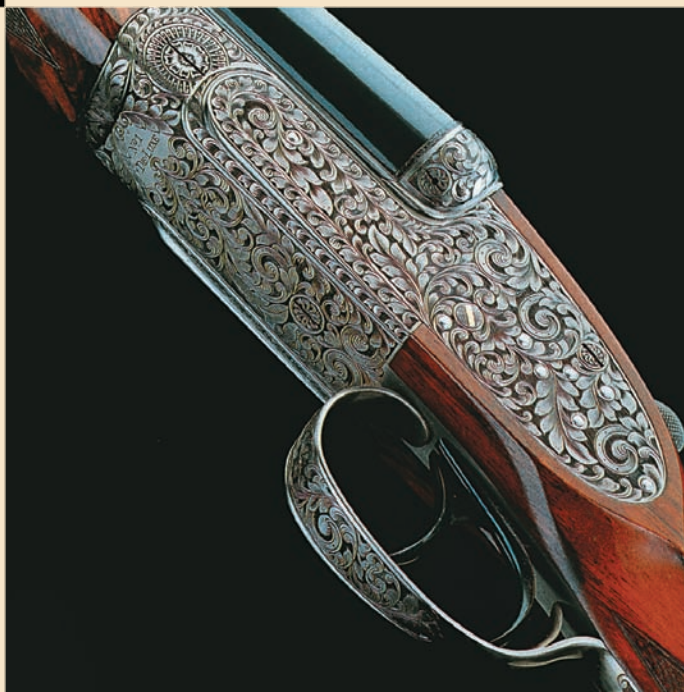
Model No 1

- (same as No 1 deLuxe with the following exceptions)*
- Fine Rose & Scroll engraving
- Straight grip, oil finished highly figured walnut stock



Model No 2

- Diamond grip
- Tear drops
- Hand detachable lock
- Side-by-side hammerless Sidelock ejector shotgun
- Forged steel action with double locking mechanism and gas vents
- Hardened steel intercepting safety sears
- Gold-lined cocking indicators
- Double triggers with hinged front trigger
- Chopper lump barrels
- Concave rib
- English scroll engraving
- Straight grip, finely oil finished walnut stock
- Checkered butt
- Silver oval
- Automatic Safety
- Available in color case hardened, or coin finished



Model No 2 Rounded Action

- Smooth graceful lines
- Side-by-side hammerless ejector shotgun
- Forged steel action with double locking mechanism and gas vents
- Hardened steel intercepting safety sears
- Gold-lined cocking indicators
- Double triggers with hinged front trigger
- Chopper lump barrels
- Concave rib
- English scroll engraving
- Straight grip, finely oil finished walnut stock
- Checkered butt
- Silver oval
- Automatic Safety
- Available in color case hardened, or coin finished



AYA CLASSIC GAME GUNS

Shown: No 2 Deluxe & Model Adarra



Thinking Side by Side? Think AYA



NECG is proud to offer the latest models from AyA, The No.2 “Deluxe” and the “Adarra” boxlock. For over eighty years, Aguirre y Aranzabal has crafted classic sidelock and boxlock shotguns that have earned a reputation around the world for quality and elegance. So highly are they regarded, in fact, that some models, like the superb #2, are among the top selling custom shotguns in England. This speaks volumes about AyA’s faithfulness to the English tradition of exquisite handcrafted doubles. As beautiful as AyA’s creations are, as gunsmiths we look at more than just appearance. That is why AyA has earned our respect.

Let AyA earn your respect as well.

NEW ENGLAND CUSTOM GUN SERVICE, LTD.
(603)287-4836 • Fax (603)287-4832



741 MAIN STREET, CLAREMONT, NH 03743
www.newenglandcustomgun.com
info@necg ltd.com