



NEW ENGLAND CUSTOM GUN SERVICE LTD.

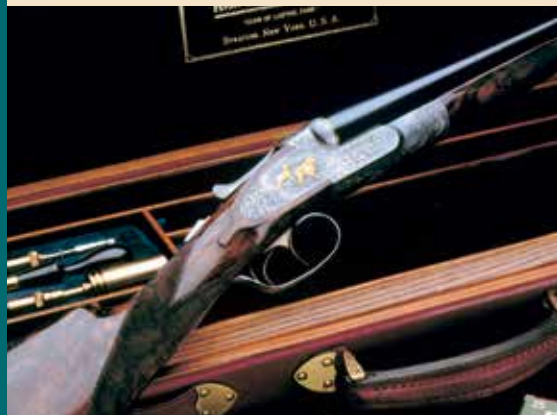


CATALOG VOLUME VI

New England Custom Gun Service, Ltd

A TRADITION OF UNPARALLELED SERVICES

As our name implies, New England Custom Gun Service, Ltd. was originally founded to provide top quality gunmaking, gunsmithing and restoration services to discerning customers whose interest and needs fall within the scope of traditional hunting and shooting of long guns. Although we now offer a large variety of firearms and products to the shooting sports industry, we still provide top quality gunsmithing as well.



The following is a partial list of services we provide. If you do not see what you need, please call us. Chances are we can help you solve your problem.

- Chokes
- Forcing Cones
- Bluing
- Case-hardening
- Action Work
- Open Sights
- Scope Mounting
- Re-barrelling
- Stock Making
- Stock Refinishing
- Checkering
- Complete Restoration
- Stock Carving
- Stock Bending
- Recoil Pads
- Custom Rifles
- Repairs
- Stock Fitting

Call us to discuss your job and we will, if possible, give you a quote over the phone, often, we will need to see the gun before we can give you a quote, due to the wide variations of make and model and the particular condition of your gun.

We stand fully behind our work and hope that our efforts will aid you in some small way to be more successful in the pursuit of the sport which we all love.



Table of Contents

| Services and Custom Firearms | | Mounts | | Sights | | Components | |
|------------------------------|----|---------------------------|----|-------------------------|---------|------------------------------|----|
| Gunsmithing | 1 | EAW Quick-Loc | 6 | Masterpiece Banded Ramp | 12 | Triggers | 18 |
| Overview | 2 | EAW Magnum Fixed | 7 | Classic Ramp | 13 | Swivels | 20 |
| AYA | 24 | German Claw | 8 | Universal Front Sight | 14 | Slings | 21 |
| Ammunition | | Recknagel | 9 | Front Sight Ramps | 15 | Pads | 22 |
| RWS | 4 | Mounts for Special Rifles | 10 | Rear Sights | 16 & 17 | Accessories and Tools | |
| Scopes | | ERA-TAC Mounts | 11 | Peep Sights | 19 | Tools | 21 |
| Schmidt & Bender | 5 | | | | | Accessories | 23 |



NECG: Your Complete Sporting Firearms Source

OVERVIEW

If it has to do with shooting, shotguns, sights, scopes, stocks or smithing, call us.



More sights than you've ever seen.

Front sights, rear sights, peeps, ramps, hoods and fiber optics...we have options for virtually every rifle. Many you won't find anywhere else, like our front ramp with unique folding hood. We can outfit CZs, Rugers, Weaver-style bases, and just about any rifle with impeccably German-machined front and rear sights.



You can't hit it if you can't see it.

We offer the full line of Schmidt & Bender riflescopes, called by experts "the finest in the world"...including the 2.5-10x40 Summit, the first Schmidt & Bender built on a one-inch tube.



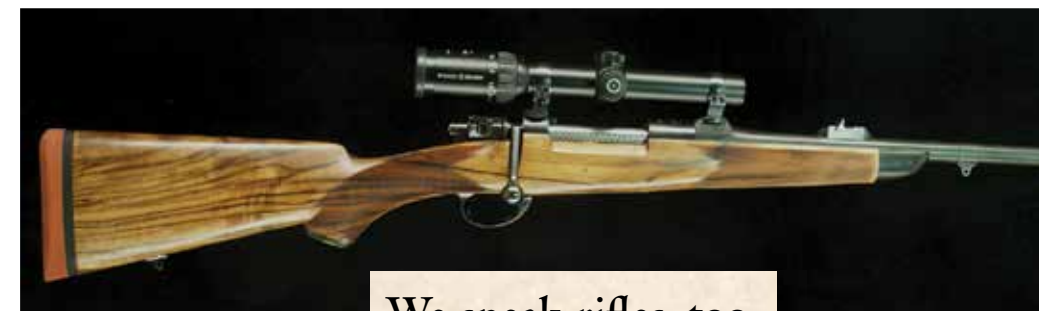
The very best-made mounts.

Any scope is only as good as its mount, and there are none better than those by EAW and Recknagel...including the most precise detachables on the market. We can devise a mounting solution for just about any rifle made.



We speak shotgun.

We can fix them, refinish them, restock them, restore them, rechoke them, and bend a stock properly. We could also fit you with a new AyA side-by-side that we believe represents the most gun for the money on the market today. If it has to do with fine doubles and bestguns, we speak the language fluently.



We speak rifles, too.

For well over two decades we've focused upon the care and feeding of high quality big bore and double rifles. If you're looking for something special, a distinctive custom rifle, or if a treasured long gun of yours needs work, let's talk. One of our creations is shown above; a NECG Sporter in .375 H&H, built on a customized 1909 Argentine Mauser action and equipped exclusively with components we offer. If you can dream it, chances are we can build it.



We speak ammunition.

We offer German-made RWS ammunition, in our experience the most precise in the world. Every batch must pass 100 quality checks and 11 test firings. The attention to detail is extraordinary, even by German standards.

extraordinary, even by German standards.

4

RWS

AMMUNITION

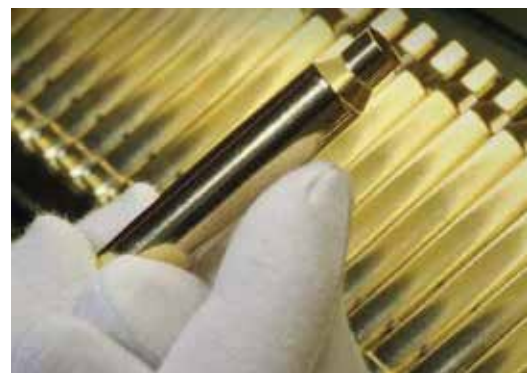


It's the Porsche of the ammunition world.

The ammunition made by Germany's RWS is, in our opinion, the most precise in the world...made with attention to detail extraordinary even by German standards. Every batch must pass 100 different quality checks and 11 test firings. RWS would not trust anyone else to make their bullets, either...constantly tested in the laboratory and in the field, as they have been for over 100 years. Be warned, though—once you use RWS, you'll never settle for less. Fortunately, we can keep you supplied.



NECG's Mark Cromwell believes in testing what the company sells...in this case, an RWS H-Mantel bullet in 9.3x62.



Unparalleled quality and consistency.

No detail is too small to be important in RWS ammunition. For example, primers are actually matched to individual cases and sealed with lacquer. RWS makes its own cases from solid brass reels that must first pass RWS in-house metallurgical tests. Even their powders are custom-made to RWS specifications. There is simply no higher quality, more rigidly inspected and controlled ammunition on earth.



SCHMIDT & BENDER

5

Schmidt & Bender

SCOPES



Exos



A full 1x to 8x magnification range makes this one of the most versatile hunting scopes on the market. Applicable to dangerous game or driven hunts at 1x, as well as extreme precision on small targets at longer distances.

Summit



Built in Germany, made for America. A highly versatile 2.5-10x40 lightweight and streamlined design with a one-inch tube. Allows easy upgrading on many American rifles without having to purchase new mounts. Second focal plane reticle.

Police/Marksman II



For years, the choice of professional sharpshooters and tactical teams that demand the utmost in precision...including the U.S. Marine Corps. Winner of the Precision Sniper Rifle competition of the U.S. Army, Navy, and Air Force Special forces in 2011. A wide range of models, options and reticles offered.

Short Dot



Evolved from the Police/Marksman line to answer requests from the Special Operations and law enforcement communities for a riflescope that excels in CQB situations yet still performs well at medium distances. Small and unobtrusive, Short Dot riflescopes are appropriate to a wide range of weapons platforms.

Polar T96

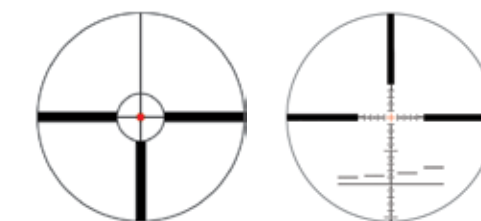


The brightest low-light hunting scope in the world—the first to ever achieve 96%+ total light transmission. The 2.5-10 x 50 Polar T96 has a 34mm tube for maximum adjustment range, and Posicon or locking BDC turrets. The ultimate low-light performer.

Reticles

Schmidt & Bender offers a wide and diverse range of reticles, designed to maximize performance within each riflescope product line. There are a number of fast, simple and effective reticles designed primarily for hunting, most available with illumination. Schmidt & Bender's unique FlashDot is also offered on several designs, especially appropriate for dangerous and driven game hunting.

An equally extensive choice of highly sophisticated reticles is offered in the PM II and Short Dot series, created to give the professional marksman every possible advantage at short, medium and extreme ranges. FlashDot options are also available in many reticles designed for S&B tactical models.



SCHMIDT & BENDER

They've been called "the best in the world" by experts. And hunters who have used them in the field agree, gaining up to an hour a day more of shootable light. Indeed, the light transmission values of Schmidt & Bender rifle scopes are among the highest ever produced. Likewise, their reputation for quality and ruggedness has been proven around the world.

Zenith



Recipient of the prestigious International Forum Design Award for excellence in product design, selected as "Best of" by major publications in the U.S. and Europe, the Zenith series represents the epitome of quality, performance, and the most advanced optical engineering on the market. There is no better choice for the serious hunter.

Klassik



The same superb optics and light transmission as the Zenith series, but in a simpler design and minus a few advanced Zenith features. A more economical way to experience legendary Schmidt & Bender quality.

Stratos



The most technologically advanced S&B product line. Programmable "choose your light" system interfaces with your PC giving you complete control over reticle illumination, allowing you to custom tailor it to your own personal preferences and hunting situations.

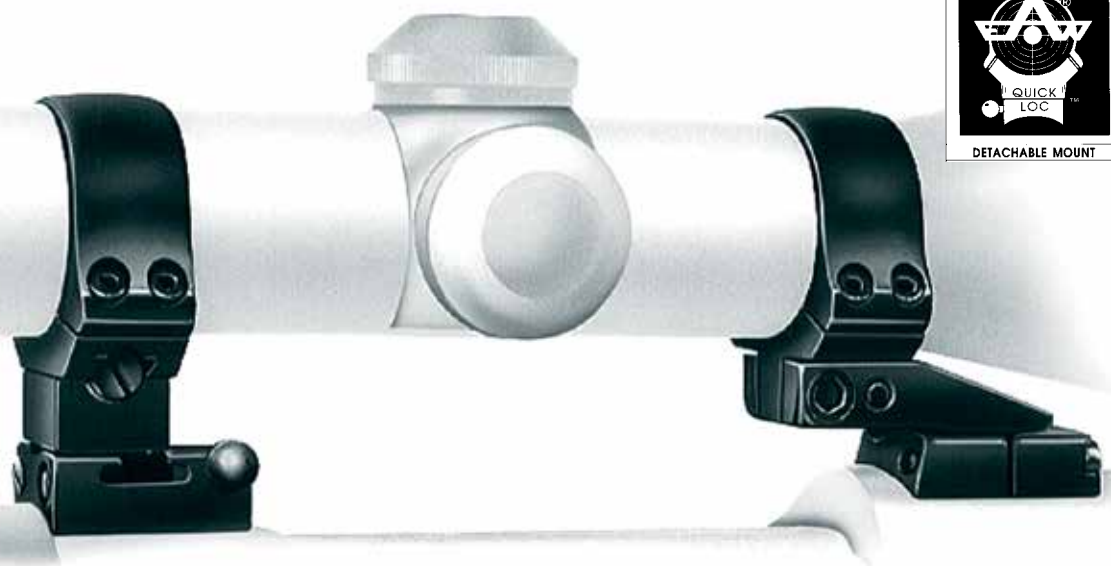
Call us!

We are experts in Schmidt & Bender riflescopes and can recommend the model ideal for your application, your rifle and your budget.

MOUNTS

We stock:

Beretta
Mato
BRNO
Browning
A-Bolt Mauser, BAR, BLR
Dakota
76, 97
FN
Mauser
Heym
Express
SR20, 30
Marlin
336, 444, etc.
Mauser
98, 98 w/bulb
94, 96
Remington
700, 7, 742
7400, 7600
Sako
all Hunting
TRG-21
Sauer
80/90
200, 202 Base
Savage
110, 99
Shilen
Steyr
M-S, L,M,S
SSG, SBS
Weatherby
MK V, Jr
Winchester
Mod 70 3-hole spacings, 88
Other bases available:
Blank bases
Blaser
BSA
Carl Gustav
Chapuis
Krico
Krieghoff
Parker Hale
Santa Barbara
Schultz & Larsen
Tikka
Voere
Walther
11mm dovetail
16mm dovetail
19mm dovetail
and others!

**EAW Quick Loc Mount**

The EAW "Quick-Loc" mount is a precision made all steel mount that provides the user with front ring leveling adjustment and rear ring windage adjustment, as well as exchangeable elevation blocks to allow for stress free mounting with the bore. No more shimming. The scope can be removed for access to open sights, to pack in luggage during travel, and to snap in a differ-

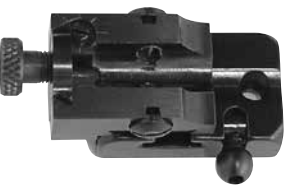
ent scope for changes in hunting conditions or game sought, effectively turning one gun into two. Its design will allow for 100% repeatability for dependable performance. Having installed EAW mounts for over 20 years we feel confident that you will be completely satisfied. Rings available in 1"/26mm, 30mm and 34mm. For more information you can visit our website or EAW at www.eaw.de.

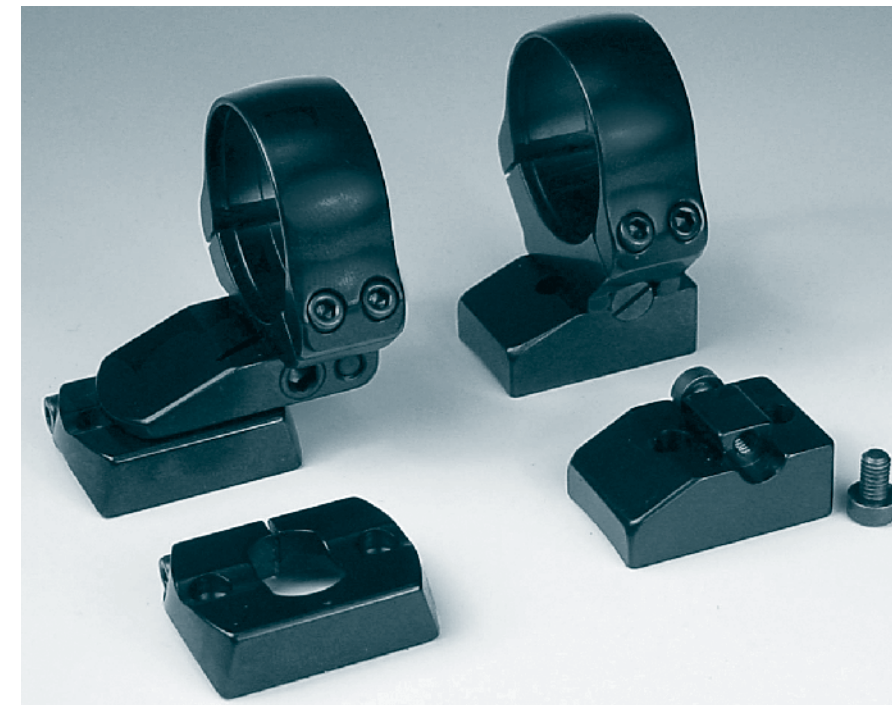
The proper mounting system for your rifle and your scope

To receive the proper mount for your rifle, please provide the following:

- Make, model and caliber of your rifle
- Mod 70 owners, is your rifle "pre-64", "post 64" or new "Classic"?
- Make and magnification of your scope
- Tube and objective lens diameter

EAW Quick-Loc Detachable Mount & EAW Magnum Fixed Mount

| | Quick-Loc | Magnum | Quick-Loc Components |
|--|--|-------------------------------|--|
| Group A: A-Bolt, Dakota, FN Mauser, Rem 700, Wby Mark V, Win 70 1" (26mm) 30mm | E-A1Q E-A30Q | E-A1F E-A30F | Pair of mount bases E-110 Pair of 1" (26mm) rings E-100 Pair of 30mm rings E-300 Pair of 34mm rings E-340 |
| Group B: Mannlicher-Schoenauer, Mauser 66 1" (26mm) 30mm | E-B1 E-B30 | | Receiver sight (Peep) For EAW "QL" rear bases. Locks into rear base w/.093" and .125" discs. N-105 Base not included. |
| Group C: All other models or other heights 1" (26mm) 30mm 34mm | E-C1 E-C30 E-C34Q | E-C34F |  |

**Features**

Oversize rotary and rear ring dovetails

Leveling adjustment for front ring

Rear ring available in various heights and with built-in windage adjustment

Three ring heights

Front rings with four extension lengths

Bases and rings are adjustable

Benefits

=Strong enough for the heaviest calibers and scopes

=Stress free mounting for optimal accuracy

=Reticle can be centered for optimal optical performance of your scope

=Will accommodate various size scopes

=Allow for proper eye relief

=No looseness, ever

EAW Magnum Fixed Mounts

The EAW Magnum Fixed Mount, designed by NECG, is a solid steel mount for use with large scopes on magnum rifles. The system utilizes the adjustable front ring and base found on the EAW Quick-Loc, while the rear base consists of a dovetail onto which the rear ring slides, providing adequate shear strength. The rear ring is held in place by two windage screws and different rear ring heights are available to eliminate the need for shimming or refitting of bases. Other fixed scope mounts lack this adjustability and strength when used with many of today's magnum calibers.

EAW Magnum Fixed Mount Available Models:

Browning A-Bolt

FN Mauser

Dakota 76

Remington 700

Steyr Classic

Steyr Forester

Pro Hunter

Weatherby

Winchester 70 pre-64

Winchester 70

Magnum pre-64

Winchester 70 XTR

Blank Bases

TIPS!

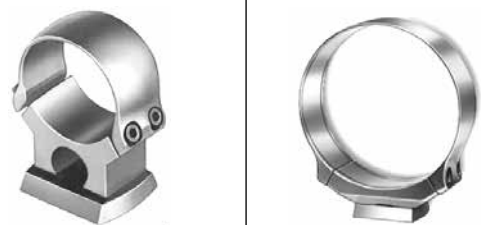
When asked for scope mount recommendations:
A well constructed quality scope mount will work as long as proper mounting is done. When installing the bases, check to see they are level or parallel with each other and they fit the action's contour. If the scope was previously mounted, re-center the scopes elevation and windage adjustments. After rings have been attached, collimate or boresight before completely tightening the rings. When boresighting, the bases may need to be refit to correct the scopes windage and elevation with the bore. Lapping the rings can be done, but should not be necessary if properly aligned. We often hear that a "scope has run out of adjustment". Actually the scope was misaligned and does not have enough adjustment to correct the problem.

Determining Scope Ring Height

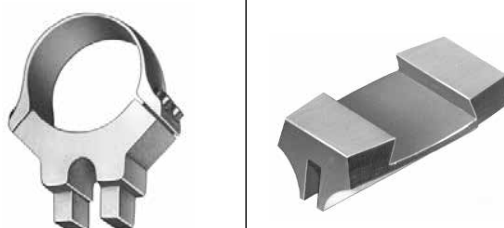
What height rings and bases will I need to mount my scope? Example: Mounting a Leupold 3-9x40 on a Winchester Model 70. First measure the scope and take the actual outside objective diameter and subtract the main tube diameter. Divide the remainder by 2. This will equal the height from the bottom of the main tube to bottom of the objective bell. Leupold outside objective diameter 1.83" - 1.00" (tube Diameter) = .830" divide by 2 = .415" or 10.5mm. Now with a combined scope base and ring height of .415", you will be mounting the scope with its objective bell level to the top of the action or receiver. For a lower mount you must determine how much lower the objective bell can be mounted below the top of the action and subtract this from .415". Keep in mind that this does not determine bolt handle and/or safety clearance.

German Claw Mounts

MOUNTS

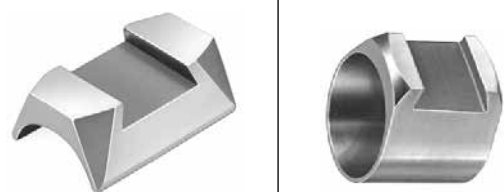


Front Rings



Rear Rings

Drilling Base



Saddle Bases

Sweat on Ring Base



Rear Bases with Lock up



Mannlicher-Schoenauer Rear Ring and Base



Traditional German Claw Mounts

German claw mounts have been the traditional mount ever since scopes were first used for hunting. They are still the mount of choice on double rifles, drillings and combination guns, as well as on custom magazine rifles and unique rifles like the Mannlicher Schoenauer. There are few mounts that allow a scope to be removed and re-installed as quickly as on the German claw mount. This mount also has the most reliable return to zero. Claw mounts are not interchangeable! **Each mount must be individually fitted to close tolerances. This requires the skill of an experienced gunsmith and since the work is time consuming, these mounts can be the most expensive.** Beware of a "cheap job" as it will probably not be worth having. A great variety of rings and bases are available for fitting to most

sporting guns and new rings can be fitted to existing bases where the scope was lost. In choosing a scope, it is very important to remember that due to the way the scope is removed (by lifting it up in the rear) it should not protrude too far past the front ring. In other words, the front ring must be located close to the front end of the scope. This, as well as eye relief, must be taken into account when choosing a scope. It is best if you let your gunsmith advise you on the most suitable scope and mount components. To install a claw mount we must have the scope which will ultimately remain on the gun. When installing a scope on a double rifle which is not regulated for a scope, we often find that although you can see better, the gun may shoot differently than with open sights. Re-regulation could be required at an additional cost.

MOUNTS

Scope Mount for Swiss K-31

No gunsmithing is required for this clamp on mount. Scope rings mount onto the base rail and extend laterally. All steel construction. Rear ring has windage adjustment.



Complete mount with 1"/26mm rings E-S1
Complete mount with 30mm rings E-S30

Mounts for BRNO/CZ Rifles

Detachable pivot mount with lever for BRNO ZKK 600, 601, 602 and CZ 537, 550 rifles. Available in 1"/26mm and 30mm. Front base requires drilling and tapping for two 6-48 screws. The rear ring will lock directly onto the receivers rear dovetail with a unique adjustable lever system. Rear ring equipped with windage adjustment.



Complete mount with 1"/26mm rings E-Z1
Complete mount with 30mm rings E-Z30

Slide on Rings

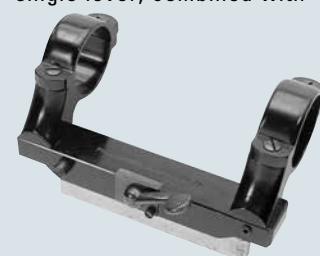
We offer scope rings for BRNO, SAKO 75, SAKO TRG, STEYR SSG and also guns with Weaver style bases. Rings available in 1"/26mm, 30mm and 34mm. *Call for more details.*



Jaeger Side Mount

The Jaeger Side Mount has a steel base, aluminum rings and slide. It locks up with a single lever, combined with

a lock plunger to prevent accidental loss of removable part. Scope can be mounted low and be quickly removed for open sights or receiver sight. Low base only for bolt action rifles. Underside flat, no holes. Base must be prepared and installed by a gunsmith. Complete mount with 1" rings and blank base J-200 *Specify make and model of gun & scope when ordering.*



Mounts for Mannlicher Schoenauer

All steel construction. Front base requires drilling and tapping 2 holes in the front receiver ring. Rear base mounts to left side of split rear bridge. One height only (wing safety clears scope tube).



1" E-B1
30mm E-B30



EAW Quick-Loc for Zeiss Rail
EAW Quick-Loc for Traditional
Available for Schmidt & Bender,
Doctor and Swarovski rail
scopes

Mounts for Rail Scopes

The standard "Quick-Loc" mount can be ordered with attachments to mount a European Rail scope or a Zeiss scope with "Zeiss Rail System". These mounts must be "special ordered". Please call with the following information: Make, Model and Caliber of gun, as well as, the make and model of scope to be mounted.



Call for more details.

Side Mounts

All steel double lever mount with windage adjustment under rear ring. Height of scope tube above receiver ring. **.788"/20mm.**
1"-E-C1



30mm-E-C30

Available for:
Mauser 98, Mauser, small ring, Ruger Mini 14, Steyr Mannlicher Schoenauer, US M1, Winchester 94

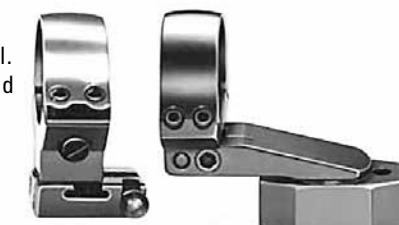
Top Mounts for Ruger M-77

All steel construction. Front base cradles Ruger base. Rear ring with windage adjustment locks to Ruger rear base with lever and plunger lock. Requires drilling & tapping 2 holes for front base. **1"-E-C1**
30mm E-C30



Quick-Loc Mount for Mauser 66

All steel construction. Front base cradles mounting rail on barrel. Rail must be drilled and tapped. Rear base fits existing holes. Specify caliber. **1" E-B1**
30mm E-B30



10

34mm Rings & Blank Components

MOUNTS

34mm Rings and Blank Components

Recknagel Classic Steel Mount

Our detachable "Classic Steel Mount" combines appealing design with high tech manufacturing to give the shooter a rugged and dependable scope mount with absolute repeatability. The all steel construction features an extra low height and a rear dovetail base that provides the lowest scope mounting option along with ample eye relief for magnum rifles. Available in 1" or 30mm, our unique system incorporates split steel rings and an oblong post that connects the rear ring with our proven "G9-PLUS" rotary lock up ensuring that

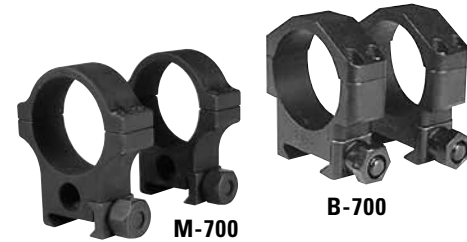


G9-PLUS lock up

the ring cannot rotate or loosen. The adjustable leveling feature properly aligns the scope with the bore of the gun eliminating the need to re-fit or shim the bases. All mounts are complete with bases and rings and detailed instructions on their assembly.

34mm Tactical Scope Rings by Badger Ordnance Near Manufacturing and Precision Reflex

Best quality heavy duty all-steel rings with recoil shoulder, machined in pairs. Reliable steel clamp and 1/2" nut, fits any Weaver style base. Height: 1" (25.4mm) to center of scope tube. Schmidt & Bender PMII tactical scopes have 34mm tubes.



34mm two-piece all-steel mount by Dave Talley for Remington Model 700

Attractive steel mount. Rings held securely in place by recoil shoulders in the bases. Overall height 1" (25.4mm) to center of scope tube. For Remington 700 only.

Not for use with S&B 3-12x50 PMII LP



T-700



Blank Scope Mount Rings

For the custom gunsmith who wants to create his own mount. Machined from high grade steel, polished, not blued.

Base Dimensions:
Width: .940"/24mm
Length: .595"/15mm
Height: 1.063"/27mm

Diameter
1"/26mm **E-500-001**
30mm w/2 screws each side **E-500-030**



Blank EAW Bases

The bases allow you the gunsmith to install the well proven EAW mount on just about any rifle. Length: 1.260"/32mm Height, front: .354"/9mm Rear: .394"/10mm

Front base **E-404**
Rear Base **E-405**

Picatinny Rails by Badger Ordnance

This Picatinny spec. one piece mount is machined from 4142 pre-hardened (28-32rc) steel. It has a Mil-Std-1913 slot pattern for more mounting options and a 20 MOA forward cant

for extended range. Uses Badger Ordnance, Precision Reflex or any "picatinny" compatible ring. Left handed versions available, call for details. Select action make and style when ordering.

- B-720** Remington 700 Short Action
- B-725** Remington 700 Long Action
- B-730** Winchester 70 Short Action
- B-735** Winchester 70 Long Action



ERA-TAC Mounts

11

ERA Mounts

MOUNTS

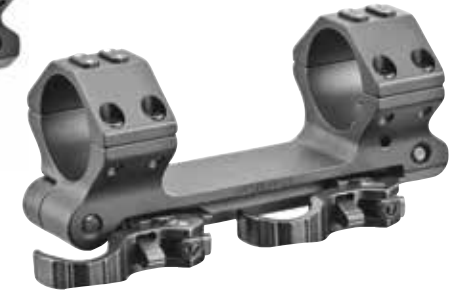


ERA-TAC Inclination Mount: Instantly add up to 70 MOA adjustment range

Few riflescopes have sufficient built-in adjustment range to compensate for bullet drop at all ranges. These superb mounts with integrated inclination adjustment allow you to adjust your elevation from 0 to 70 MOA, in 10 MOA increments, simply by loosening the cross bolts and rotating the integral hand wheel. Self-locking thread inserts ensure permanent and stable seating of both bolted connections. Available in nut or hand lever configurations. Now, you can greatly increase your rifle's elevation capability quickly and precisely with one mount that "does it all."

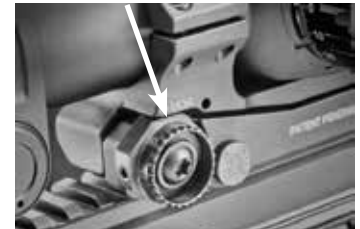


Inclination Mount/Nut



Inclination Mount/Lever

| Ring | Height | Part # w/ lever | Part # w/nut |
|-------|--------------|-----------------|--------------|
| 30 mm | 20 mm/0.787" | T1063-0020 | T2063-0020 |
| 30 mm | 25 mm/0.984" | T1063-0025 | T2063-0025 |
| 34 mm | 20 mm/0.787" | T1064-0020 | T2064-0020 |
| 34 mm | 25 mm/0.984" | T1064-0025 | T2064-0025 |
| 34 mm | 30 mm/1.181" | T1064-0030 | T2064-0030 |
| 36 mm | 22 mm/0.866" | T1066-0022 | T20636-0022 |



Integral hand wheel



ERA-TAC Ultra-Light Mounts Minimal bulk and weight

The sleek ERA-TAC Ultra-Light mounts were developed specifically for the AR-15 platform, for police and military use as well as for shooting disciplines such as IPSC.

They are half the weight of standard ERA mounts. The extra-short base will not interfere with your rifle's magnification ring. A 56mm/2.2" setoff allows different mounting positions while still providing plenty of eye relief.

The Ultra-Light mounts affix to Picatinny rails with Torx screws. There are no parts to lose. All components are manufactured to Mil.-Std. specs and are absolutely rustproof. The hard anodized surface complies with MIL-SPEC Type III requirements. These precision mounts have been thoroughly tested on rifles up to .50 caliber.



| Ring | Height | Weight | Part number |
|---------|----------------|---------|-------------|
| 25.4 mm | 24.3 mm/0.957" | 5.16 oz | T3022-0024 |
| 30 mm | 22 mm/0.866" | 5.19 oz | T3023-0022 |
| 34 mm | 20 mm/0.787" | 5.22 oz | T3024-0020 |

Learn more about what makes Recknagel and ERA so exceptional at www.era-tac.de

Masterpiece Banded Ramp

SIGHTS

Masterpiece Banded Front Ramp with Interchangeable Beads

The Masterpiece Banded Ramp is widely used by custom makers all over the world. It's all steel construction and graceful styling make it the first choice of many customers. The ramp will accept all of the Masterpiece Banded Ramp front sight inserts,

including silver beads, partridge, fiber optic and folding night sights with both traditional mammoth ivory inserts, and the new "white on white" folding night sight. The hood is locked into position by a spring loaded detent button. Delivered in the white and requires gunsmith installation.

Note: Inside diameter is cylindrical and not tapered.

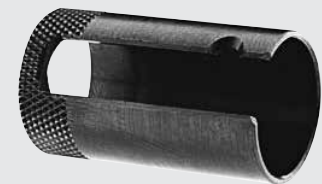
Inside diameter is cylindrical and not tapered.
 Overall ramp length: 84.75mm / 3.34"
 Ramp width: 8.5mm / .335"
 Band length: 29.85mm / 1.17"
 Band wall thickness: .030"



TIP!

To create in-between sizes, slip ramp over a used barrel, tap on with a plastic hammer and stretch band with blows from a smooth, flat hammer. Keep tapping back until you have the proper diameter. Allow 1/8" to 3/16" of movement for press fit applications. Grind off hammer marks with belt sander, polish and blue. Drive back making sure that top of ramp is level. Install and tighten set screw. You can simply friction fit, use Loctite or epoxy, and/or soft solder the ramp in place.

| Code | Inside Diameter (A) | | Height to Dovetail (B) | |
|-----------|---------------------|------|------------------------|------|
| | Inches | mm | Inches | mm |
| R-100-551 | .551 | 14.0 | .500 | 12.7 |
| R-100-571 | .571 | 14.5 | .421 | 10.7 |
| R-100-590 | .590 | 15.0 | .421 | 10.7 |
| R-100-610 | .610 | 15.5 | .421 | 10.7 |
| R-100-630 | .630 | 16.0 | .421 | 10.7 |
| R-100-650 | .650 | 16.5 | .421 | 10.7 |
| R-100-670 | .670 | 17.0 | .386 | 9.8 |
| R-100-689 | .689 | 17.5 | .386 | 9.8 |
| R-100-708 | .708 | 18.0 | .386 | 9.8 |
| R-100-728 | .728 | 18.5 | .386 | 9.8 |
| R-100-748 | .748 | 19.0 | .362 | 9.2 |
| R-100-768 | .768 | 19.5 | .362 | 9.2 |
| R-100-788 | .788 | 20.0 | .362 | 9.2 |
| R-100-827 | .827 | 21.0 | .362 | 9.2 |



Hoods

| Code | Inside Diameter |
|-----------|-----------------|
| R-106-551 | .551" - 14mm |
| R-106-630 | .630" - 16mm |
| R-106-708 | .708" - 18mm |



Window Hood with Sweep

.630" - 16mm R-120



Dovetail Cutter

For detachable beads. For use in your own ramps, using our front sights. P-125

SIGHTS

Classic Ramp with Folding Hood



The Classic Ramp with Folding Hood is a modern version of a period style sight ramp that dates back to the days of the early express rifles with its flat back tapered ramp and folding hood.

The ramp will accept all of the same interchangeable front sight inserts used in their popular Masterpiece Banded Ramp which includes silver beads, fiber optic, partridge and folding night sights. The ramp can be modified to suit the taste or style of any rifle. The hood components have a blue oxide finish and the ramp is delivered in the white ready for fitting.

| Code | Inside Diameter (A) | |
|-----------|---------------------|------|
| | Inches | mm |
| R-170-590 | .590 | 15.0 |
| R-170-610 | .610 | 15.5 |
| R-170-630 | .630 | 16.0 |
| R-170-650 | .650 | 16.5 |
| R-170-670 | .670 | 17.0 |
| R-170-689 | .689 | 17.5 |
| R-170-708 | .708 | 18.0 |
| R-170-728 | .728 | 18.5 |
| R-170-748 | .748 | 19.0 |
| R-170-768 | .768 | 19.5 |
| R-170-788 | .788 | 20.0 |
| R-170-866 | .866 | 22.0 |
| R-170-945 | .945 | 24.0 |

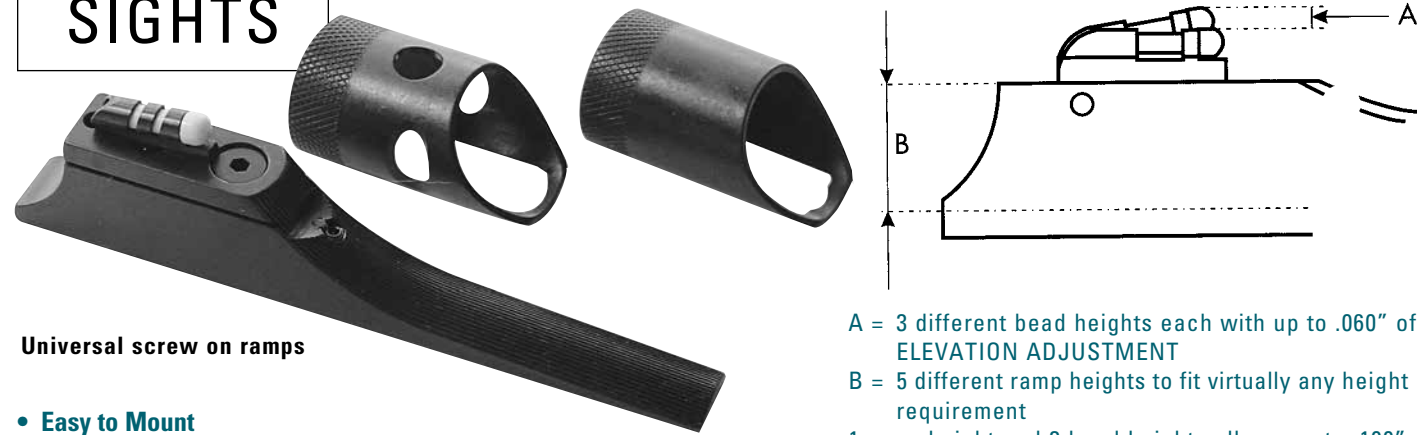
Interchangeable Front Sights

Base: 22mm-.866" Long: 5.25mm-.207" Wide: 2mm-.079" thick

| | Overall Height mm/inch (When ordering, specify size.) | | | | | | | | |
|--|---|-------------|-------------|-------------|-------------|-------------|-------------|--------------|--|
| | 4.5mm/.177" | 5.0mm/.197" | 6.0mm/.237" | 6.5mm/.256" | 7.0mm/.276" | 8.0mm/.315" | 9.0mm/.355" | 10.0mm/.394" | |
| S1 R-101, 5/64", Silver Bead | R-101-177 | R-101-197 | R-101-237 | R-101-256 | R-101-276 | R-101-315 | R-101-355 | R-101-394 | |
| S2 R-102, 3/32", Silver Bead | | | R-102-237 | R-102-256 | R-102-276 | | | | |
| S3 R-103, Sourdough Sight | | | | R-103-256 | R-103-276 | R-103-315 | R-103-355 | R-103-394 | |
| S4 R-104, Night Sight | | | | R-104-256 | | | | | |
| S5 R-105, 3/32", Fiber Optic | | | | R-105-256 | R-105-276 | R-105-315 | R-105-355 | | |
| S5 R-140, 1/16", Fiber Optic | | | | R-140-256 | R-140-276 | R-140-315 | R-140-355 | | |
| S6 R-104-W White | | | | R-104-W | | | | | |
| S7 R-123 2.5mm White | | | | R-123-256 | R-123-295 | R-123-335 | R-123-375 | | |
| S8 R-124 4mm White | | | | R-124-256 | R-124-295 | R-124-335 | R-124-375 | | |

Universal Front Sights

SIGHTS



Universal screw on ramps

- Easy to Mount
- Easy to adjust
- Easily interchangeable
- Rear attaching, lockable hood
- 5 Ramp heights
- 3 Bead heights
- 6 Bead styles
- 3 Hood sizes

Hood to lock in place with set screw

A = 3 different bead heights each with up to .060" of ELEVATION ADJUSTMENT
 B = 5 different ramp heights to fit virtually any height requirement
 1 ramp height and 3 bead heights allows up to .100" of total ADJUSTMENT with 1 sight.

| Code | Universal Ramp Inches (mm) | Front Sight | Combined Mid-Height | | Combined Lowest | | Combined Highest | |
|-----------|-------------------------------|-------------|---------------------|------|-----------------|------|------------------|------|
| | | | Inches | mm | Inches | mm | Inches | mm |
| R-107-385 | Low .385 (9.8) | Low | .592 | 15.1 | .562 | 14.3 | .622 | 15.8 |
| | | Medium | .611 | 15.5 | .581 | 14.8 | .641 | 16.3 |
| | | High | .631 | 16.1 | .601 | 15.3 | .661 | 16.8 |
| R-107-455 | Medium .455 (11.6) | Low | .662 | 16.8 | .632 | 16.1 | .692 | 17.6 |
| | | Medium | .681 | 17.3 | .651 | 16.6 | .711 | 18.1 |
| | | High | .701 | 17.8 | .671 | 17.1 | .731 | 18.6 |
| R-107-525 | High .525 (13.3) | Low | .730 | 18.5 | .700 | 17.8 | .760 | 19.3 |
| | | Medium | .750 | 19.0 | .720 | 18.3 | .780 | 19.8 |
| | | High | .770 | 19.5 | .740 | 18.8 | .800 | 20.3 |
| R-107-595 | Extra High .595 (15.1) | Low | .802 | 20.4 | .772 | 19.6 | .832 | 21.1 |
| | | Medium | .821 | 20.9 | .791 | 20.1 | .851 | 21.6 |
| | | High | .841 | 21.4 | .811 | 20.6 | .871 | 22.1 |

Bottom radius is .2813"-7.13mm (.562 diameter) which can be fitted to other diameter barrels.

Universal Front Sights

| Code | Style | Size | |
|-----------|------------------------|--------|------|
| | | Inches | mm |
| R-108-245 | Silver Bead | Low | .080 |
| R-108-250 | | Medium | 2.0 |
| R-108-255 | | High | |
| R-108-345 | Partridge Sight | Low | .099 |
| R-108-350 | | Medium | 2.5 |
| R-108-355 | | High | |
| R-108-545 | White Bead | Low | .099 |
| R-108-550 | | Medium | 2.5 |
| R-108-555 | | High | |
| R-108-645 | Fiber Optic Bead | Low | .060 |
| R-108-650 | | Medium | 2.5 |
| R-108-655 | | High | |
| R-108-745 | Large Fiber Optic Bead | Low | .158 |
| R-108-750 | | Medium | 4.0 |
| R-108-755 | | High | |
| R-108-845 | Large White Bead | Low | .158 |
| R-108-850 | | Medium | 4.0 |
| R-108-855 | | High | |

Hoods for Universal Ramps

Hoods have a knurled front end. They protect the front sight but let in the light so you can see your sight.

Small: .550"(14) R-109-550
 Medium: .630"(16) R-109-630
 Large: .708"(18) R-109-708
 Window: .630"(16) R-110-630

For the lowest ramp only one size hood, medium, is available and attaches to the front.

Universal interchangeable front sights

Front Sight Ramps

SIGHTS

Universal Banded Ramp

When we combined the classic good looks of our popular Masterpiece Banded Ramp and the adjustability of the Universal Front Ramps we came up with the "UNIVERSAL BANDED RAMP". Inside diameter is straight, not tapered. Requires installation by a gunsmith. All the ramps are 11mm high. Please refer to the following chart for the overall height from the top of the barrel to determine the proper bead to order from page 14. Note: delivered "in the white," not blued.



| Code | Inside Diameter | |
|-----------|-----------------|------|
| | Inches | Mm |
| R-130-610 | .610 | 15.5 |
| R-130-650 | .650 | 16.5 |
| R-130-670 | .670 | 17.0 |
| R-130-690 | .690 | 17.5 |
| R-130-708 | .708 | 18.0 |
| R-130-748 | .748 | 19.0 |
| R-130-768 | .768 | 19.5 |

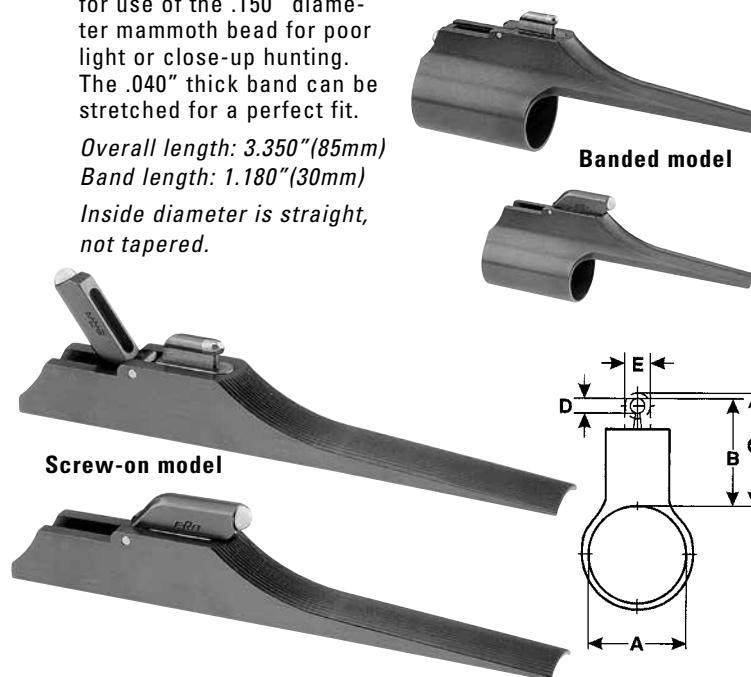
| Bead Height | Setting | Overall heights and adjustment range of different beads | | | | | | | |
|-------------|-----------|---|------|------------------|------|-----------|------|----------------|------|
| | | 2mm Silver | | 2.5mm White F.O. | | Partridge | | 4mm White F.O. | |
| | | Inches | mm | Inches | mm | Inches | mm | Inches | mm |
| LOW(4.5mm) | Lowest | .620 | 15.8 | .615 | 15.6 | .610 | 15.5 | .600 | 15.2 |
| | Mid-Point | .650 | 16.5 | .645 | 16.4 | .640 | 16.3 | .630 | 16.0 |
| | Highest | .680 | 17.3 | .675 | 17.2 | .670 | 17.0 | .660 | 16.8 |
| MED(5.0mm) | Lowest | .640 | 16.3 | .635 | 16.1 | .630 | 16.0 | .620 | 15.8 |
| | Mid-Point | .670 | 17.0 | .665 | 16.9 | .660 | 16.8 | .650 | 16.5 |
| | Highest | .700 | 17.8 | .695 | 17.6 | .690 | 17.5 | .680 | 17.3 |
| HIGH(5.5mm) | Lowest | .660 | 16.8 | .650 | 16.5 | .650 | 16.5 | .640 | 16.3 |
| | Mid-Point | .690 | 17.5 | .680 | 17.3 | .680 | 17.3 | .670 | 17.0 |
| | Highest | .720 | 18.3 | .710 | 18.0 | .710 | 18.0 | .700 | 17.8 |

Holland & Holland Style Front Sight Ramps

These well-made banded and screw on ramps bring back the traditional Holland & Holland style night sight. Flip forward to expose a .0781" silver bead. Flip back for use of the .150" diameter mammoth bead for poor light or close-up hunting. The .040" thick band can be stretched for a perfect fit.

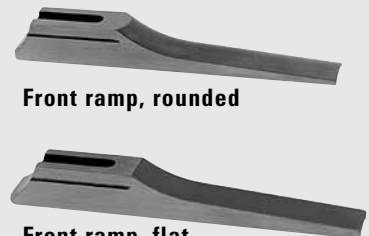
Overall length: 3.350"(85mm)
 Band length: 1.180"(30mm)
 Inside diameter is straight, not tapered.

| Model | screw on | | banded | | banded | | banded | | banded | |
|-------|----------|------|-----------|-----------|-----------|-----------|-----------|------|--------|------|
| | Inches | mm | Inches | mm | Inches | mm | Inches | mm | Inches | mm |
| A | .2813 | rad. | .590 | 15.0 | .650 | 16.5 | .709 | 18.0 | .748 | 19.0 |
| B | .669 | 17.0 | .630 | 16.0 | .630 | 16.0 | .630 | 16.0 | .630 | 16.0 |
| C | .709 | 18.0 | .669 | 17.0 | .669 | 17.0 | .669 | 17.0 | .669 | 17.0 |
| D | .080 | 2.0 | .080 | 2.0 | .080 | 2.0 | .080 | 2.0 | .080 | 2.0 |
| E | .158 | 4.0 | .158 | 4.0 | .158 | 4.0 | .158 | 4.0 | .158 | 4.0 |
| | | | R-111-610 | R-112-590 | R-112-650 | R-112-709 | R-112-748 | | | |



Basic Ramps & Hoods

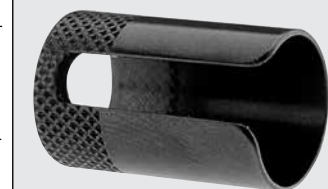
These ramps come with a dovetail for the beads listed on page 13 and grooves for the hoods listed below. They can be soldered or screwed on, and styled to your taste. These hoods fit the ramps below, have a knurled front, are blued and come in three diameters.



Front ramp, rounded

Front ramp, flat

Front ramp, with round top tail R-113
 Front ramp, with flat top tail R-114

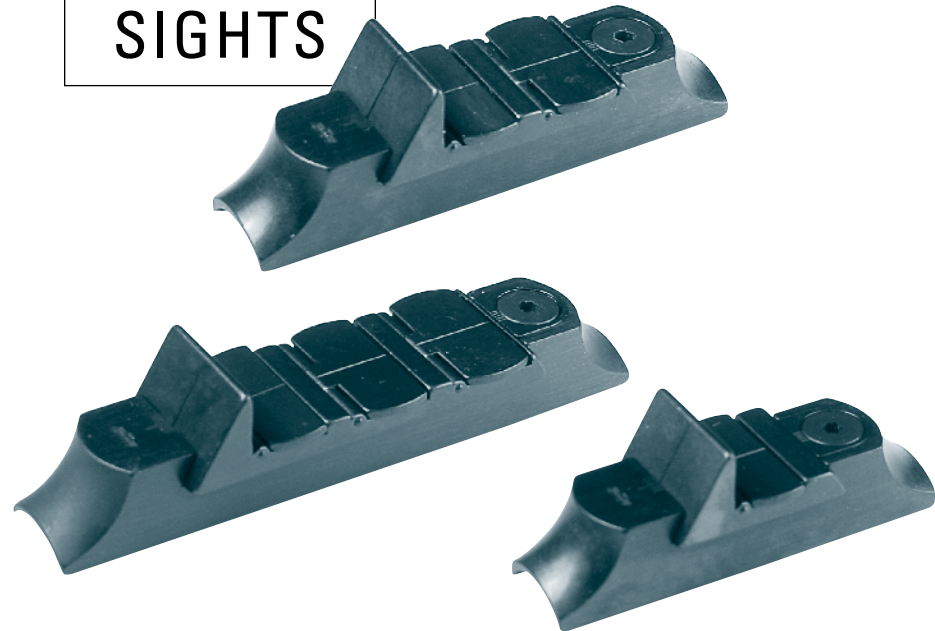


.551"-14mm R-115-550
 .630"-16mm R-115-630
 .708"-18mm R-115-708

Overall length: 3.543"-90mm
 Underside: .315" Radius or fits .630" diameter barrel

Rear Sights

SIGHTS



Classic Express Sight with Island Base

Fitting an express sight into its base is not an easy task. It must be moved sideways when sighting in, but must never come loose thereafter. The express sights in this combination are fitted so they can be tapped sideways but are absolutely tight when clamp screw is tightened with the supplied allen wrench. The sights and bases are attractively shaped, polished and blued. The sight has witness lines on both ends and the base has gradations. Center lines can be filled with white lacquer. Top of the sights are left flat for regulating at the required distances by filing in a wide "V" or "U" notch into them.
 Width of base: 14mm
 Heights over barrel:
 Standing sight: 17mm-.670", First leaf: 16.5mm-.650", Second leaf: 17mm-.670"
 Third leaf: 18mm-.709"

| Code | Model | For Barrel Diameter | | Length of Base | |
|----------|----------------|---------------------|------|----------------|----|
| | | From | To | Inches | mm |
| R-202-S | 3 leaf express | .600 | .675 | 3.228 | 82 |
| R-202-M | 3 leaf express | .675 | .730 | | |
| R-202-L | 3 leaf express | .730 | .830 | | |
| R-202-XL | 3 leaf express | .830 | .930 | | |
| R-203-S | 2 leaf express | .600 | .675 | 2.638 | 67 |
| R-203-M | 2 leaf express | .675 | .730 | | |
| R-203-L | 2 leaf express | .730 | .830 | | |
| R-203-XL | 2 leaf express | .830 | .930 | | |
| R-204-S | 1 leaf express | .600 | .675 | 2.205 | 56 |
| R-204-M | 1 leaf express | .675 | .730 | | |
| R-204-L | 1 leaf express | .730 | .830 | | |
| R-204-XL | 1 leaf express | .830 | .930 | | |

Unfinished Island Bases



3 Leaf **R-209**
 Length: 3.584"-91mm
 Height to Dovetail: .270"-6.85mm

2 Leaf **R-210**
 Length: 2.953"-75mm
 Height to Dovetail: .238"-6.85mm

Leaf **R-211**
 Length: 2.206"-56mm
 Height to Dovetail: .238"-6.85mm

Ring Bases for Rear Sights

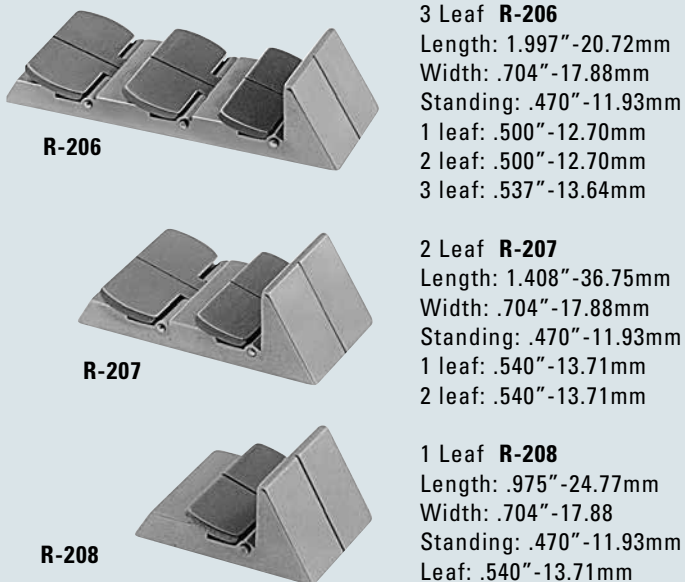
Rear sight ring base with recoil shoulder, steel, in the white. Inside diameters from .590"-15mm to .770"-19.5mm in .020"/.5mm increments. Dovetail: .630"-16mm. Overall length: 2.086"-53mm. **R-802**

Rear sight ring base with recoil shoulder, 1.378"-35mm dovetail for 2 leaf express sight, steel, in the white. Overall length: 2.560"-65mm. .827"-21mm inside diameter **R-803**

.846"-21.5mm inside diameter **R-804**



Unfinished Express Sights with 1, 2 or 3 Folding leaves



3 Leaf **R-206**
 Length: 1.997"-20.72mm
 Width: .704"-17.88mm
 Standing: .470"-11.93mm
 1 leaf: .500"-12.70mm
 2 leaf: .500"-12.70mm
 3 leaf: .537"-13.64mm

2 Leaf **R-207**
 Length: 1.408"-36.75mm
 Width: .704"-17.88mm
 Standing: .470"-11.93mm
 1 leaf: .540"-13.71mm
 2 leaf: .540"-13.71mm

1 Leaf **R-208**
 Length: .975"-24.77mm
 Width: .704"-17.88mm
 Standing: .470"-11.93mm
 Leaf: .540"-13.71mm

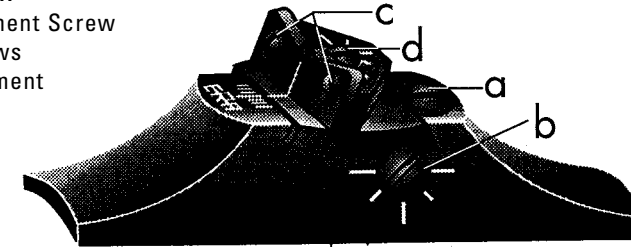
Rear Sights

SIGHTS

Masterpiece Fully Adjustable Rifle Rear Sight

Precision machined all steel sight, polished and blued. Attaches with 8-36 socket head screw. Use small screwdriver to adjust windage and elevation.

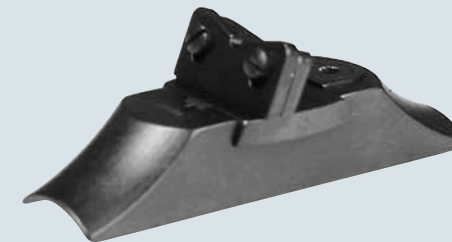
Length: 2.165"-55mm
 Width: .550"-14mm,
 Height in lowest position in notch: .550"-14mm,
 Adjustment up: .050"-1.27mm
 A= Clamp Lock Screw
 B= Windage Adjustment Screw
 C= Blade Lock Screws
 D= Elevation Adjustment Screw



| Base Code | Size | For Barrel Diameter | | | |
|-----------|---------|---------------------|------|--------|------|
| | | From | | To | |
| | | Inches | mm | Inches | mm |
| R-200-675 | Small | .600 | 15.2 | .675 | 17.2 |
| R-200-730 | Medium | .675 | 17.2 | .730 | 18.5 |
| R-200-830 | Large | .730 | 18.5 | .830 | 21.0 |
| R-200-930 | X-Large | .830 | 21.0 | .930 | 23.6 |

Classic Adjustable Rear Sight

Same as our Masterpiece sight but windage is adjusted by pushing sideways, then locking it with a reliable clamp. Precision machined all steel sight, polished and blued, with 6-48 fastening screw and allen wrench, shallow V and U notch. Length: 2.170"-55mm Width: .550"-14mm Height in lowest position to bottom of notch: .550"-14mm Adjustment up: .060"-1.5mm



See Thru Fiber Optic Sight with Base

This unique all steel sight with fiber optic centerline and windage adjustment allows for a fast shot without blocking the view of the target. We find that it works well with our "Universal" front sights. Available in 5 different overall heights for 4 different barrel diameter. When ordering, please give Base Order Number with Sight Height number.



| Base Code | For Barrel Diameter | | | |
|-----------|---------------------|------|--------|------|
| | From | | To | |
| | Inches | mm | Inches | mm |
| R-230-675 | .600 | 15.2 | .675 | 17.2 |
| R-230-730 | .675 | 17.2 | .730 | 18.5 |
| R-230-830 | .730 | 18.5 | .830 | 21.0 |
| R-230-930 | .830 | 21.0 | .930 | 23.6 |

| Sight Code | Overall Sight Heights with R-230 base | | Sight Only | |
|------------|---------------------------------------|----|------------|----|
| | Inches | mm | Inches | mm |
| R-205-356 | .550 | 14 | .356 | 9 |
| R-205-394 | .590 | 15 | .394 | 10 |
| R-205-472 | .670 | 17 | .472 | 12 |
| R-205-551 | .750 | 19 | .551 | 14 |
| R-205-630 | .825 | 21 | .630 | 16 |

Fixed and Folding Rear Sights



Slanted Forward R-213
 Width: .708"-18mm
 Length: .630"-16mm
 Overall Height: .630"-16mm

Straight R-214
 Width: .708"-18mm
 Length: .630"-16mm
 Overall Height: .630"-16mm

Sweat-on Base for Both Sights R-217
 Can be screwed on.
 Width: .551"-14mm
 Length: 2.000"-51mm
 Height: .060"-1.5mm

1 Folding R-215
 Width: .750"-19mm
 Length: .620"-15.75mm
 Overall Height: .550"-13.9mm
 Folding: .608"-15.4mm

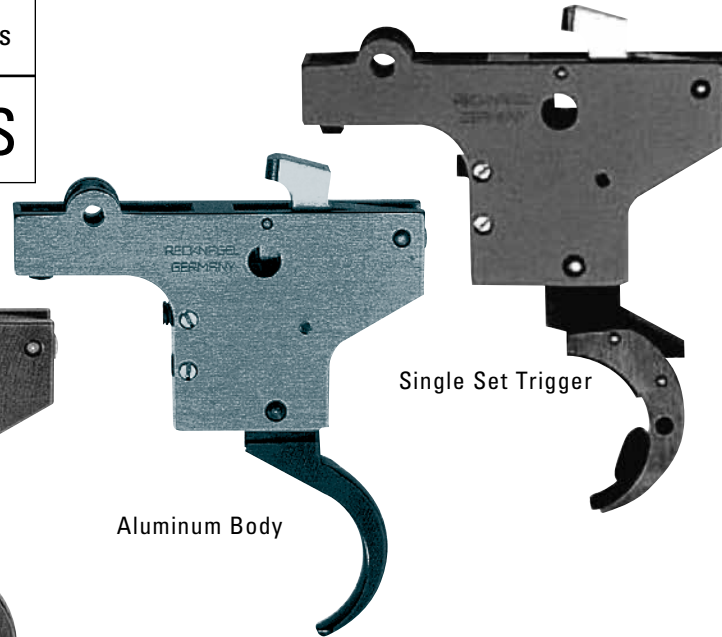
18

Triggers
Safeties

TRIGGERS



Steel Body



Aluminum Body

Single Set Trigger

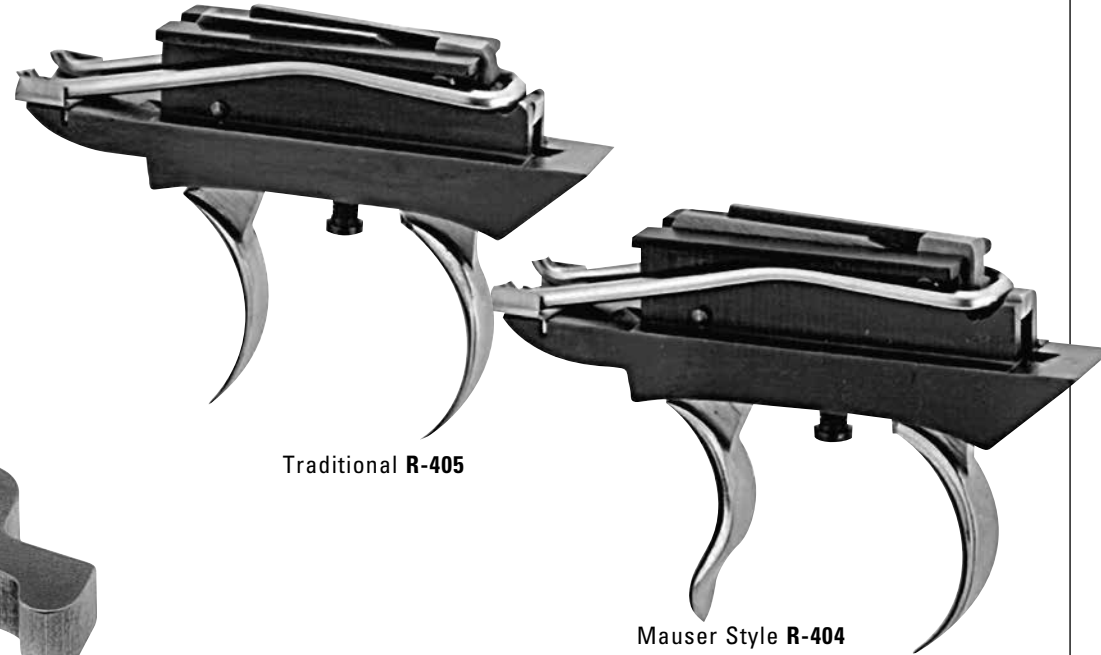
Adjustable Triggers for Mauser 98

These fully adjustable Mauser 98 triggers are available in an aluminum steel body and a steel body single set version. These require gunsmith installation. Trigger weight adjusts from 2lbs to 4.5lbs.

- Trigger with Steel body **R-416**
- Trigger with Aluminum body **R-415**
- Single set Trigger with Steel body **R-417**

Traditional Double Set Trigger for Mauser 98

These triggers must be fitted into the Mauser trigger guard, locked in place, and worked over inside the trigger bow. Kick-off must be properly fitted and case hardened.



Traditional R-405

Mauser Style R-404

Kick-off R-412

3 Position Safety for Mauser 98 & Remington 700

The Mauser 3 position safety has an ingenious locking lever incorporated into it which will lock the lever into the 3rd "Safe" position. It is easily released by pushing down on the locking lever as you push the safety into the 2nd position.

Precision machined bolt sleeves with 3-position safety, in the white.

Mauser 98 Safety with gas shield **R-425**

Remington 700 with locking lever **R-429**



Mauser 98 Safety with Locking Lever **R-428**

Peep Sights

19

Peep Sights

Peep Sights

NECG Peep Sights

If you are a fan of receiver sights, you will find that these offerings from NECG will greatly enhance your experience afield. Based on two styles, a "Peep" sight with screw-in Aperture or a "Ghost Ring" configuration. All are machined from solid steel, are fully adjustable for windage and elevation and each provides an excellent sight picture, even for those with less-than-perfect eyesight. They also require no gunsmithing.

The "Peep" Sight for Ruger Rifles, the Weaver Peep, and the one for Grooved .22 rifles are all supplied with two apertures (.093" and .125") The Weaver Peep comes with two aperture slides for: flat top bases or deep channel bases. The "Ghost" ring models for Ruger, CZ 550 and CZ 527 come with a .093" hole and .060" and .125" that can be ordered separately.



Peep Sight for Ruger Rifles **N-100**

Peep Sight for Weaver Style Bases **N-106**

Peep Sight for Grooved .22 cal. rifles **N-108**

Ghost Ring Peep Sight CZ550: **N-109**
CZ527: **N-104**
Ruger: **N-100G**

Front sight inserts for Ruger and CZ Rifles

An ideal complement to the peep sight is the new White Bead, Partridge, and Fiber Optic Front Sights which replace the standard sights on the Ruger M-77 and No 1 as well as the CZ 550 and 527 rifles. They offer vastly improved visibility, particularly in poor lighting, and make for quicker sight alignment and target acquisition.

| | Overall Height mm/inch (When ordering, specify size.) | | | | | |
|-------------------------------------|---|-------------|-------------|-------------|--------------------------|----------------------|
| | 7.6mm/.300" | 8.4mm/.330" | 8.9mm/.350" | 9.5mm/.375" | 10.5mm/.415" | 11mm/.435" |
| Ruger .098"/2.5mm White Beads | R-150-300 | R-150-330 | R-150-350 | R-150-375 | R-150-415 | R-150-435 |
| Ruger .098"/2.5mm Fiber Optic Beads | | R-151-330 | R-151-350 | R-151-375 | R-151-415 | R-151-435 |
| Ruger .060"/1.5mm Fiber Optic Beads | | R-153-330 | R-153-350 | R-153-375 | R-153-415 | R-153-435 |
| Ruger .080"/2mm Partridge Sight | | | | | | R-152 (can be filed) |
| CZ White | 6mm | 6.5mm | 7.5mm | 8.5mm | 9.5mm | |
| | R-160-237 | R-160-256 | R-160-295 | R-160-335 | R-160-375 | |
| CZ Fiber Optic | | R-161-256 | R-161-295 | R-161-335 | R-161-375 | |
| CZ Partridge | | | | | R-162-375 (can be filed) | |

CZ / Replacement One Leaf Express Sight



R-220

This all steel one leaf Express sight was designed to offer the CZ 550 Safari a simple solution for rear sight replacement. It can also be used when a higher Express sight is needed to replace an NECG "Classic 2 Leaf Express" or "Unfinished 2 Leaf Express" sight that is too low and the point of impact needs to be raised.

- Overall length: 1.407"/35.75mm
- Standing sight height: .571"/14.50mm
- Folding sight height: .697"/17.70mm
- Sight body width: .703"/17.85mm
- Folding sight width: .827"/21.00mm
- Dovetail depth: .173"/4.40mm
- 60 degree dovetail

TIP!

Front sight heights: When using one of our NECG peep sights, we suggest first shooting or collimating the peep sight with the original front sight. If you need to change the front sight height or your firearm does not have a front sight, contact your local gunsmith for assistance.

20

Swivel Studs

SWIVELS



Classic Barrel Band Swivel & Swivel Studs

They are very thin and available with inside diameters from .630" (16mm) to .945" (24mm) in .020" (0.5mm) increments. Swivel studs are available with wood screw studs for the butt and machine screw studs and nut for the forend.

| Code | Band Size | Code | Band Size |
|-----------|--------------|-----------|--------------|
| R-300-630 | .630" 16.mm | R-300-810 | .810" 20.5mm |
| R-300-650 | .650" 16.5mm | R-300-830 | .830" 21.mm |
| R-300-670 | .670" 17.mm | R-300-850 | .850" 21.5mm |
| R-300-690 | .690" 17.5mm | R-300-870 | .870" 22.mm |
| R-300-710 | .710" 18.mm | R-300-890 | .890" 22.5mm |
| R-300-730 | .730" 18.5mm | R-300-910 | .910" 23.mm |
| R-300-750 | .750" 19.mm | R-300-930 | .930" 23.5mm |
| R-300-770 | .770" 19.5mm | R-300-950 | .950" 24.mm |
| R-300-790 | .790" 20.mm | | |



Classic Swivel Stud w/ machine screw R-302

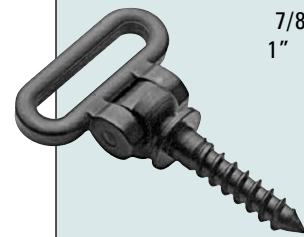


Classic Swivel Stud w/Woodscrew R-301

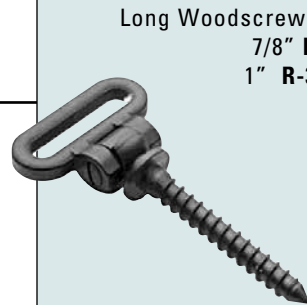


Installation tools (counterbore, drill & tap) N-930

Fixed Swivels 7/8" & 1" Loop



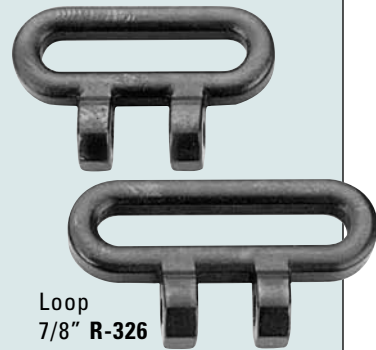
Short Woodscrew Stud 7/8" R-310 1" R-310-1



Long Woodscrew Stud 7/8" R-320 1" R-320-1



Screw on with 2 Screws 7/8" R-314 1" R-314-1



Loop 7/8" R-326 1" R-325



Machine Screw Stud & Nut 7/8" R-311 1" R-311-1



Concave Base R-312 Convex Base R-313 Flat Base R-317



Quick Detachable Swivels 7/8" & 1" Loop

Quick Detachable Swivels for American Studs (single) 7/8" M-300 1" M-300-1 Quick Detachable Swivels for European Studs (single) 7/8" R-316 1" R-316-1

Mannlicher Style Front Swivel

The proper swivel for a slim Mannlicher style full length stock R-315



21

Trigger Guards Slings Tools

SLINGS TOOLS

Tools



Jeweling Tool

For years, we have been looking for a jeweling tool which would not need constant trimming. We found the right material and we want to share it with other gunsmiths. The sleeve fully supports the rod and center screw adjusts the amount of protrusion. The rod can be

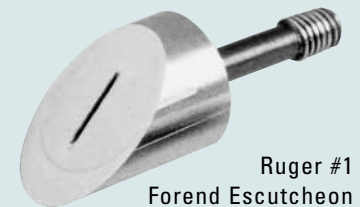
trimmed to the desired diameter on a grinding wheel or sander. Use readily available abrasive paste to get uniform results.

Stainless steel jeweling tool with 3 rods N-901

Replacement rods, package of three N-902

Ruger #1 Forend Escutcheon

An attractive way to cover the opening in a factory or custom made forend. The counterbore will assure a professional installation.



Ruger #1 Forend Escutcheon N-110



Counterbore N-910



Screwdriver

Handy fold out screwdriver with 4 blades, best quality steel. R-807

| Blades thickness | Width |
|------------------|------------------|
| .022" | 0.55mm .160" 4mm |
| .022" | 0.55mm .200" 5mm |
| .026" | 0.65mm .236" 6mm |
| .026" | 0.65mm .315" 8mm |

Slings

Classic Rifle Sling

2" wide classic safari sling. The rugged cotton webbing has two rows of silicone rubber strands to prevent slipping. The leather fasteners take a one inch swivel and are secured by a bridle hook and keeper for silence. A-120

Braided Leather Sling

Our traditional 7/8" sling is made of best quality leather and braided in such a way, that it will not stretch excessively. A-100

Cloth Back Leather Sling

This 7/8" sling is made of best quality leather and lined with green canvas on the underside. A-101

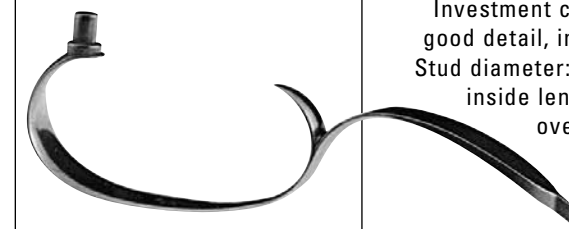
Functional, Quick Shortening Leather Sling.

Our very practical basic leather 7/8" sling can be quickly shortened when the gun is cased or placed in a gun rack. A-102

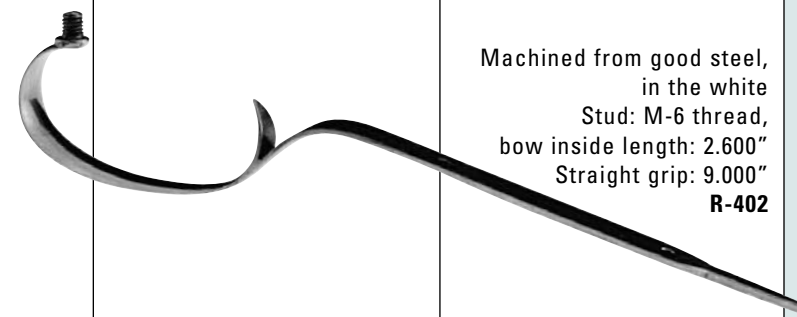
Leather Slings

All our leather slings are manufactured by the AKAH Company in Germany using only best quality leather. All buckles

Trigger Guards



Investment casting with good detail, in the white. Stud diameter: .216", bow inside length: 2.540", overall length: 5.125" R-420



Machined from good steel, in the white Stud: M-6 thread, bow inside length: 2.600" Straight grip: 9.000" R-402

22

Buttplates
Spacers

PADS



| Size | Height | | Width | |
|--------|--------|-------|-------|-------|
| | max | min | max | min |
| Medium | 5.40" | 4.60" | 1.75" | 1.50" |
| Large | 5.75" | 4.60" | 2.00" | 1.50" |

NECG Recoil Pad
A pad for all seasons
(and all sizes too)

The unique recoil pad system that lets you easily change pads on the same gun. The unique locking mechanism of the **Universal Recoil Pad** lets you quickly attach different recoil pads on the same firearms. Now you can:

Quickly change length of pull for winter and summer use, share a gun with a shooter who needs different length of pull, adjust length of pull for a youth's gun. **The Quick-Loc Mechanism** is precision made, keeping the pad tight and secure.

Yet pads can be changed in seconds! The pad itself is of the highest quality soft rubber for maximum recoil absorption.

The classic style features a well-rounded, leather grained face. The face is pre-cut for permanent tear-free attachment with wood screw, without the quick-loc mechanism if desired. Offered in medium and large sizes, they can be ordered in either black, brown or red and are supplied in four thicknesses - .750", 1.00", 1.25" and 1.50".

When ordering pad, please include size, color and thickness. **G-101**



Shotgun Handguard

These handguards are made of Latigo leather stitched over spring steel, which keeps it securely in place to protect your hand from the heat of the barrel. Available in 12,16,20 and 28 gauge. **M-401 *specify gauge**

Shotgun Snap Caps

Rifle and shotgun snapcaps for many different calibers and gauges.

W-101

For a complete listing, visit our website.



Muzzle Cap

Slim Mannlicher Style Muzzle Cap, Blued
.575" ID .610" ID
R-410-575 R-410-610



Mammoth Shotgun Beads

Mammoth ivory shotgun beads with 6-48 thread. 4mm-.157" **R-400**

Traditional Trap Grip Cap

In the white.
Outside dimensions:
Length: 1.820"-46.25mm,
Width: 1.356"-34.45mm,
Magazine Depth:
1.025"-26.03mm. **R-406**



All steel construction with two screws. 1.820 length, 1.350 width in the white. **R-403**

23

Misc.
Accessories

ACCESSORIES

Stock Cartridge Traps



Break open models:

Machined from high grade steel with flip-open lid. Delivered in the white. Choose your own swivel or swivel stud. Will hold 4 cartridges.

Standard: **R- 411**

Magnum: **R- 421**

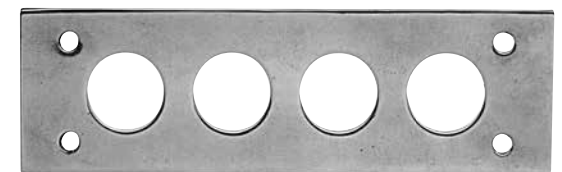
Outside: overall length: 5.050"-128mm, width: both ends:m .475"-12mm, middle: .630"-16mm, cavity: length: 2.560"-65mm and width: .550"-9mm.



Traditional Old Style break-open model with curved cover, steel, in the white. Brass plate is attached with four small wood screws, hinge is held into stock with sling swivel of your choice.

Overall length 5.9"-150mm, width of lid: .866"-22mm, width of tang:.550"-14mm.

R-407



Stainless Steel Winchester Model 70 Guard Screws

3 screw set of stainless steel guard screws with 5/32 socket heads sized and shaped to fit and compliment the Stainless Winchester Model 70 actions. Screw length may require shortening to individual actions. (Heads may require slight alteration if being fit to some

custom bottom metal units.) Each set comes with an Allen wrench. **N-70**



NECG SportingPad

All the advantages of the Universal Pad combined with a hard plastic heel to help eliminate pad "hang up" during mounting. Offered in medium and large sizes, they can be ordered in either black or brown and are supplied in four thicknesses-.750", 1.00", 1.25" and 1.50". Gunsmiths will find that the hard plastic heel is easily shaped and finished. When ordering, please include size, color and thickness. **G-120**



Buttplates and Spacers

Serrated Buttplates

| Thickness | Code |
|-------------|------------------|
| .315"-8mm* | G-201-008 |
| .394"-10mm | G-201-010 |
| .787"-20mm | G-201-020 |
| 1.180"-30mm | G-201-030 |

Outside dimensions 5.75"x2

*8mm Buttplate is 5.10" long and 1.57" wide. It is pre-drilled counter sunks.

Hard Rubber Spacers

| Thickness | Code |
|------------|------------------|
| .236"-6mm | G-202-006 |
| .315"-8mm | G-202-008 |
| .475"-12mm | G-202-012 |
| .950"-24mm | G-202-024 |

Outside dimension 5.75"x2



Why an AyA?

24

AYA

TRADITIONAL FEATURES

AyA shotguns include all the features of a traditional English gun, including chopper lump barrels and hand detachable sidelocks. Only the best quality steel is used in the sidelocks, assuring you of crisp trigger pulls that will endure for thousands of rounds.

WIDE RANGE OF OPTIONS

AyA shotguns are available in 12, 16, 20, 28 and 410 gauge and with a wide range of options. The 12, 16 and 20 having 28" barrels while 28 and 410 gauges have 27" barrels. While each AyA can be built specifically to your specifications, lower manufacturing costs make them available at a very reasonable price.

FITTED TO YOUR SPECIFICATIONS

We can fit you at our shop in New Hampshire, or you can send us a gun which fits you well and we will duplicate its dimensions. If standard stock dimensions fit you, we may well have a gun in inventory, as we normally have several gauges and models in stock, with new guns arriving every month. Check with us.

RESPECT AND SATISFACTION GUARANTEED

Of course, all AyA shotguns are completely guaranteed (excluding wood) and we here at NECG do all of the warranty work on the AyAs that we import. As gunsmiths, we look at the things that count in a quality gun. AyA has earned our respect. They will earn yours, too.



Model No 4/53

Side-by-side hammerless boxlock ejector shotgun
 Double locking mechanism with replaceable hinge pin
 Bushed firing pins
 Double triggers
 Chopper lump barrels with concave rib
 Light scroll engraving
 Automatic safety
 Straight grip oil finish walnut stock
 Silver oval
 Checkered butt



Model No 1 Deluxe

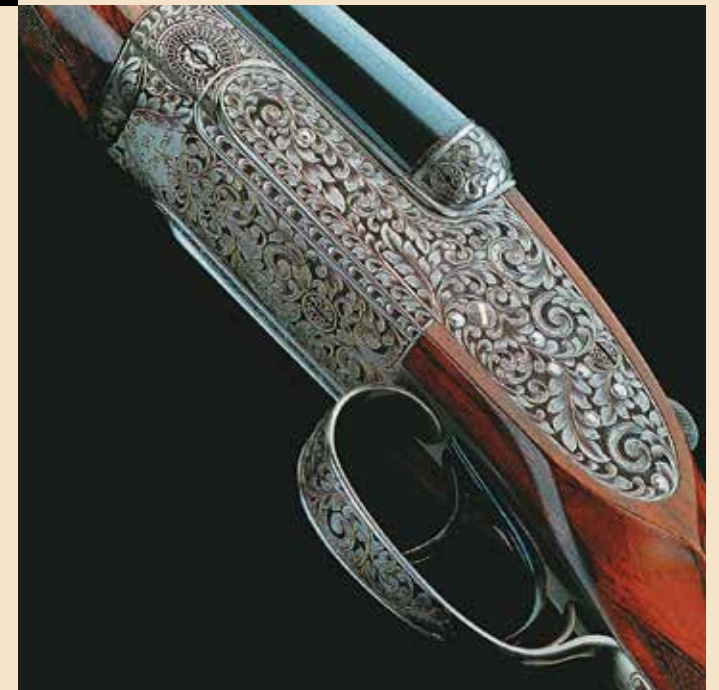
Side-by-side hammerless Sidelock ejector shotgun
 Forged steel action with double locking mechanism and gas vents
 Hardened steel intercepting safety sears
 Gold-plated internal lock parts
 Gold-lined cocking indicators
 Double triggers with hinged front trigger
 Chopper lump chrome nickel steel barrels
 Concave rib
 Best English bold foliate engraving
 Exhibition quality, oil finished walnut stock
 Gold oval
 Automatic safety
 Available with color case hardened or coin finish

Model No 1

(same as No 1 Deluxe with the following exceptions)
 Fine rose & scroll engraving
 Straight grip, oil finished highly figured walnut stock

Model No 2

Diamond grip
 Tear drops
 Hand detachable lock
 Side-by-side hammerless Sidelock ejector shotgun
 Forged steel action with double locking mechanism and gas vents
 Hardened steel intercepting safety sears
 Gold-lined cocking indicators
 Double triggers with hinged front trigger
 Chopper lump barrels
 Concave rib
 English scroll engraving
 Straight grip, finely oil finished walnut stock
 Checkered butt
 Silver oval
 Automatic Safety
 Available in color case hardened, or coin finished



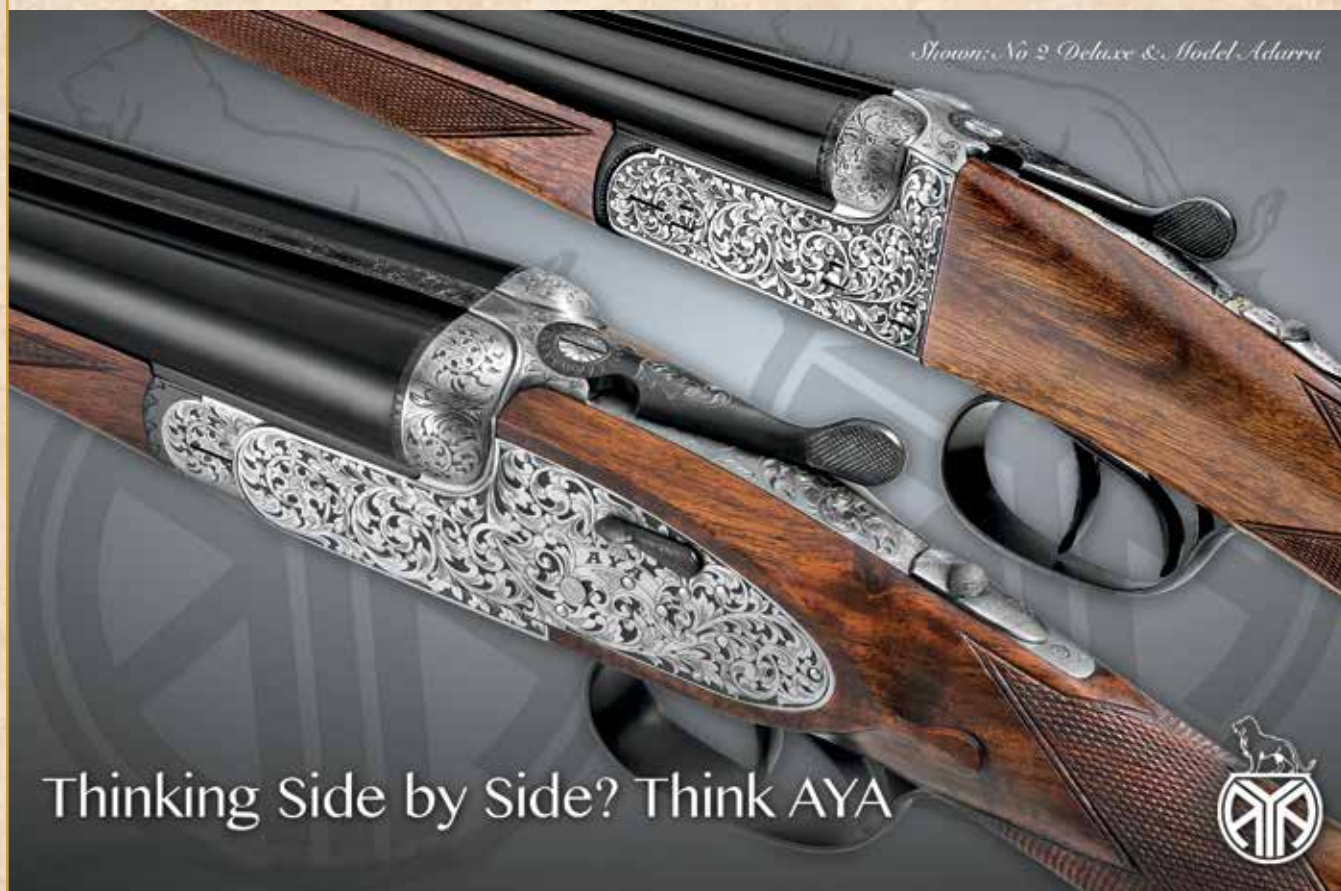
Model No 2 Rounded Action

Smooth graceful lines
 Side-by-side hammerless ejector shotgun
 Forged steel action with double locking mechanism and gas vents
 Hardened steel intercepting safety sears
 Gold-lined cocking indicators
 Double triggers with hinged front trigger
 Chopper lump barrels
 Concave rib
 English scroll engraving
 Straight grip, finely oil finished walnut stock
 Checkered butt
 Silver oval
 Automatic Safety
 Available in color case hardened, or coin finished



AYA Classic Game Guns

Shown: No 2 Deluxe & Model Adarra



Thinking Side by Side? Think AYA



NECG is proud to offer the latest models from AyA, The No.2 “Deluxe” and the “Adarra” boxlock. For over eighty years, Aguirre y Aranzabal has crafted classic sidelock and boxlock shotguns that have earned a reputation around the world for quality and elegance. So highly are they regarded, in fact, that some models, like the superb #2, are among the top selling custom shotguns in England. This speaks volumes about AyA’s faithfulness to the English tradition of exquisite handcrafted doubles. As beautiful as AyA’s creations are, as gunsmiths we look at more than just appearance. That is why AyA has earned our respect.

Let AyA earn your respect as well.

New England Custom Gun Service, Ltd
(603)287-4836 • Fax (603)287-4832



741 Main Street, Claremont, NH 03743
www.newenglandcustomgun.com
info@necgltd.com